



# THE **Birches**

**A NEWSLETTER FOR KINGSTHORN,  
MUCH BIRCH, LITTLE BIRCH & ACONBURY**

*First published 1977 **March 2019***

## **Parish Walk**

**Sunday 3 March at 9am** walking from Little Birch Village Hall through Aconbury Woods to Athelstan's Wood and back to the hall for refreshments.

A moderate walk of 4 miles and probably a little over 2 hours.

Terrain through woods, some stiles, green lanes and roads. If you wish just to do half the walk - I can point you to a shortcut back to LBVH at Model Cottages.



## **Dawn Chorus Walk**

**Easter Sunday 21 April** meeting at **Merrivale Farm**, Little Birch HR2 8BA at **5.45am** and leave at 6am for a Dawn Chorus Walk in Athelstan's Wood - with Adrian Hodges and Bob Mason - about 3 miles. No dogs. Afterwards back at the farm for bacon butties/toast & marmalade and tea/coffee.

Donations to Macmillan Cancer Support.

Angela Middleton  
Volunteer Footpath Officer  
01981 540377



## **Church Services**

Sunday 24th February - 2nd Sunday before Lent  
9.15 a.m. Much Birch Morning Worship

Sunday 3rd March - Sunday next before Lent  
11.00 a.m. Little Birch CW Communion

Wednesday 6th March - Ash Wednesday  
10.30 a.m. Much Dewchurch Service of Imposition of Ashes

Every Thursday at 9.30 a.m. Much Birch Church - Holy Communion.

## **Diary Dates**

### **February 2019**

- 26th "Flicks in the Sticks" MBCH
- 27th Gardening Club LBVH
- 28th Much Birch Steering Group MBCH

### **March 2019**

- 3rd Parish Walk LBVH 9am
- 4th Longtown History Society
- 5th Pancake Evening LBVH 5.30pm
- 6th LB Parish Council Meeting
- 7th Coffee Morning LBVH 10.30am
- 7th MB Parish Council Meeting
- 8th MB Playgroup Coffee Morning
- 12th Whist LBVH 7.30pm
- 14th Northern Harmony Steiner Academy
- 14th History Talk LBVH 7.30pm
- 14th & 16th Flicks in the Sticks MBCH
- 16th Community Book Exchange
- 16th MB Parish Consultation day 7.30pm
- 17th Big Spring Walk Fownhope
- 21st Hereford Civic Society Meeting
- 22nd MB Village Market
- 29th Quiz Evening LBVH 7.15pm

### **April 2019**

- 13th Defibrillation Training MBCH
- 21st Dawn Chorus Walk Merrivale Farm  
5.45am

## **THE BIRCHES NEWSLETTER**

We need another person to join our small production team to help form a rota for printing this newsletter. We would also find it helpful if we could have 'distributors' for the areas around 'Castle Inn' and 'Warren Lane'.

Please contact our editor Liz Hall -  
[editorial@birchesnews.org.uk](mailto:editorial@birchesnews.org.uk) - thank you.

# Little Birch Village Hall Committee

Newsletter notices for March 2019

## Coffee Morning

The next coffee morning will be on **Thursday 7<sup>th</sup> March 10:30am - 12:30pm at Little Birch Village Hall.**

Join us and enjoy a cup of tea or coffee, some cake or a biscuit. Make new friends or catch up with old friends, have a chat and find out more about the local community and let us know your thoughts and suggestions as to how we can develop these regular meetings.

If you need help with transport please contact Margaret: 01981 540374

## Whist Drive

We guarantee a warm welcome and a fun evening with good company at our monthly whist drive whatever your ability. Excellent prizes and refreshments too.

Our next **Whist Drive** will be on **Tuesday 12<sup>th</sup> March** at Little Birch Village Hall. We start at **7.30 pm** and the entrance fee is just £2.00.

## Community Book Exchange/Lending Library

The next Book Exchange will be on the morning of **Saturday 16<sup>th</sup> March** at the former Methodist Chapel opposite the Village Hall **10am – 12noon.**

All members of the community are invited to join us for this enjoyable monthly event which offers not only a wide range of books and DVDs (to suit all ages and interests) but also an opportunity to meet others and exchange recommendations for a good read.

There is a charge of just £1 per adult towards the cost of the hire and refreshments.

## Art Space/Creative Writing/Crafts

**21<sup>st</sup> February until 28<sup>th</sup> March, Thursdays from 3-5pm at Little Birch Village Hall. £3.00 per session, to pay for hire of the hall and refreshments.**

Following on from the Art Space sessions organised by Maz Jooma, the participants enjoyed this so much, they have decided they would like to continue with sessions themselves. Therefore, a further 6 sessions have been arranged. Sessions will be self-directed: drawing, painting, creative writing, knitting, quilting or any other crafts which people are interested in. Bring your own materials and join the group to have a chat and do some craft work. All are welcome – contact Margaret for further details (01981-540374) or just turn up.

## Other events in March

3<sup>rd</sup> March – Parish Walk 9am from Little Birch Village Hall

5<sup>th</sup> March – Pancake Evening (5.30pm – 8pm).

6<sup>th</sup> March - LBPC meeting

14<sup>th</sup> March – History talk—Local Archaeological Finds

27<sup>th</sup> March – Gardening Club

29<sup>th</sup> March – Quiz Evening

**History talk.** On Thursday March 14<sup>th</sup> Peter Reavill, the local Finds Officer based in Ludlow, is coming to talk to us about “Local Archaeological Finds”. This will include a whole range of finds made by various methods – digs, metal detecting, chance etc. Peter’s job involves indentifying and dating objects so many of his finds give interesting information about local history. This should be a fascinating talk. If you have anything which you would like Peter to identify, please bring it along. The talk will be in Little Birch Village Hall at 7.30. Entry of £2.50 will include light refreshments

**Pancake evening** – It’s that time again. Tuesday March 5<sup>th</sup> is Shrove Tuesday so pancakes (lots of them) will be available with a wide range of filling, both savoury and sweet from 5.30 till 7.30. It will save cooking an evening meal for both parents and children! Entry for each person will be £2.50 and will include 2 pancakes. Extras can be purchased at 50p each. Teas, coffees and soft drinks will also be available.

## **Little Birch Village Annual Quiz**

Our annual quiz will take place on Friday March 29<sup>th</sup> in Little Birch Village Hall. Come along and see if this year your team can win the cup. There will be teams of four but if you can’t make up a team, come along anyway and we should be able to join you up with someone.

The quiz will start at 7.30 but you need to be in your places by 7.15.

Entry fee is £2.00 per person.

Refreshments will be served in the interval

## **TEA ON THE TRAIL**

AT ST MARY’S CHURCH, LITTLE BIRCH

### **Refreshments for walkers**

Enjoy a break for a cup of tea or coffee



**Donations** to cover costs and for much needed renovation work at St Mary’s Church.

**Thank you**



St Michael's Hospice  
Always a place of light and love

**Plant Fair:**

The third annual Plant Fair at St Michael's Hospice will be a celebration of the joy of gardening. Taking place on 3<sup>rd</sup> – 4<sup>th</sup> May, plant lovers can browse a wide range of herbaceous perennials, bedding plants, annuals, trees, shrubs, alpines, bulbs, carnivorous and indoor plants grown by professional and amateur gardeners. In addition to plants, there will be fresh strawberries and asparagus; beautiful handcrafted wooden jewellery and home decor; cards, prints, coasters and mugs; wild bird food; and pottery and preserves. This year the Fair, which is free to enter, is expanding into the Hospice's lower garden - a large, tranquil, open grass area. A golf buggy will transport visitors from the car park to the Plant Fair site. Hot and cold drinks plus fresh, homemade cakes will be available in our newly-refurbished cafe, all day on both days. Delicious two-course lunches will be served between 12pm and 2pm each day. There is no booking necessary for lunches.

**A big "thank you" to the Wassailers!**



**Access line:**

01432 852 080 – Call 24 hours a day, 7 days a week  
Are you living with a terminal illness, or caring for someone who is?  
Our free advice and support line is here to help. We understand that it can be a difficult time, and that's why we're here for you 24 hours a day, 7 days a week. The phone number is a single point of access allowing you to speak confidentially to members of our clinical team who can provide advice and information on subjects like accessing services and controlling symptoms.

**Facebook community group:**

For those who use social media, St Michael's Hospice has launched a community forum on Facebook. It is a closed group for supportive conversation between families, patients and people connected to the Hospice. If you think you might benefit from this group, you can request to join by searching 'St Michael's Hospice Community Forum' on the Facebook search icon, and then click 'Groups'.

**Big Spring Walk – Sunday 17<sup>th</sup> March, 2019:**

Spring will soon be with us. Celebrate this wonderful time of year by enjoying a stroll through our glorious, scenic countryside. The St Michael's Hospice Big Spring Walk guides you along your choice of four circular routes (2k, 5k, 11k, 16k), all beginning at Fownhope Recreation Ground. Your walk will be fully signposted, and our team of marshals will be positioned along the paths ready to help you on your way. There is no cost for this event as long as places are booked in advance online at [www.st-michaels-hospice.org.uk/big-spring-walk/](http://www.st-michaels-hospice.org.uk/big-spring-walk/)

*No Stress, No Worries,*

# Glazy Days

- ◆ **CONSERVATORIES**
- ◆ **WINDOWS**
- ◆ **DOORS**
- ◆ **FASCIAS**
- ◆ **SOFFITS**
- ◆ **GUTTERS**

◆ **ALSO MISTED UNITS RE-**

01981 541121  
07818 611010

www.glazydays.net

Email: sales@glazydays.net



## EMMA BRADBURY EQUINE

Mobile horse clipping services  
Horse sitting / Holiday Cover  
Or just an extra pair of hands!

**25 years experience with horses**  
**Fantastic references available**

01981 541385 : 07725 536648

01981 541385 : 07970 346460

## BRENDAN MORRIS CONSTRUCTION & CARPENTRY SPECIALISING IN uPVC WINDOWS, DOORS & CONSERVATORIES

call now for a free quotation  
on; 07855760912  
email

[brendanmorris05@gmail.com](mailto:brendanmorris05@gmail.com)

## Much Birch

### Parent, Baby and Toddler Group

**Come and Play!**

*Much Birch  
Village Hall  
Every Friday  
9.30am – 12.30pm  
Birth to 4 years*

Chat and fun  
for all

Crafty  
Activities

Outdoor and  
indoor toys  
and play

Snacks

Drink lots of  
Tea or Coffee!

Make new  
friends

Friendly and  
Relaxed



For more information please contact:  
Karen 07817716137 or Lucy lcook8910@gmail.com

## CROSS ROADS CARE

Forest of Dean &  
Herefordshire

**Crossroads Care are a specialist charity  
working to help and support unpaid carers**

If you are caring for a family member, friend or neighbour, our Health and Wellbeing Service may be able to assist you. We offer a range of services including:

### Home visits and support planning

Our support workers can arrange home visits to discuss carers needs and carry out in-depth support planning, tailored to individual circumstances

### Gents Pub Club and Ladies Lunch Club

Regular groups aimed at those being cared for who, due to ill health or disability, may have difficulties getting out to socialise. We provide door to door transport and have qualified support staff on hand

### Community events

Monthly trips out across Herefordshire for Carers and those they care for. With our qualified support staff on hand to ease the caring role, our trips are the perfect chance to get out and about and meet new people

Call us on 01432 355373

[www.crossroadshereford.org.uk](http://www.crossroadshereford.org.uk)

[info@crossroadshereford.org.uk](mailto:info@crossroadshereford.org.uk)

Fred Bulmer Centre, Wall Street, Hereford, HR4 9HP

Registered Charity Number: 1086841

## BAYLEY'S WINDOW CLEANING SERVICE

WATER FED POLE AND TRADITIONAL

WE ALSO CLEAN:-

- ⇒ GUTTERS AND FACIAS
- ⇒ CONSERVATORY ROOFS

### *FREE QUOTATIONS*

\* REFERENCES CAN BE GIVEN \*

\* ESTABLISHED IN AREA \*

PHONE ANDREW

HOME: 01432 508979

MOBILE: 07771 870891

EMail: bayleyscleaning@gmail.com

### **Much Birch Playgroup Coffee Morning**

**Friday 8th March 10 to 11.30am**

**Tasty coffee or tea, lovely home made cakes  
and a raffle**

**Exciting activities planned for little ones**

**All moneys raised for the benefit of this  
special little group**

**Please come and support this small vital  
community asset**



## Harlequin and Columbine

Back in 2006 the late Hilary Gould assembled a group of enthusiastic people who performed the pantomime Treasure Island early the following year in little Birch Village Hall. The three performances were so successful and well attended that the Hall committee has supported performances every year since then.



In the following years new directors came forward and the stage, scenery, lighting and sound system were improved to high standards. Many local people became performers, singers, stage hands, publicists and helpers. Some started as young children, gained experience and confidence, then graduated to leading parts in succeeding years.

The pantomime this year, entitled Harlequin and Columbine, was written, directed and introduced by Frank Ryding. As he explained, the characters originated way back in history and preceded those used in modern pantomimes based on fairy tales.

Audiences filled the hall for all three performances and showed appreciation and enthusiasm by loud laughter, applause, booing and groaning in all the right places. The entire cast should be well pleased with their performances.

Memorable aspects included the stream of malapropisms from Madame Pompadour (Jenny Baldwin), jokes from Pantaloon (Tim Betts), the singing of Punch (Becky Thomas), the scary Scaramouch (Richard Green) and the scatty Pompadour sisters (Jane Bolam and Anita Roberts). The outrageous Dame Elaria was played by Bob Barnett. Title parts of Harlequin and Columbine were convincingly acted by Ellen Green and Tegan Askey.

A delightful group of six excited young people, including three members of the Scrivens family, had speaking parts playing urchins.

The cast and skilful operators behind the scenes, too numerous to mention, combined to produce evenings of excellent entertainment. Thanks to the Drama Group and Little Birch Hall committee for making it possible. We look forward to 2020 when it a new version of Treasure Island is expected.



## THE AXE & CLEAVER

Much Birch, Hereford, Herefordshire. HR2 8HU

Tel No: 01981 540203

Proprietors Andy & Sue Hoare

## WEEKLY SPECIALS

MONDAY –FRIDAY LUNCHTIME SPECIAL

TWO COURSES

£9.95

~~~~~

WEDNESDAY

SENIOR CITIZENS' LUNCH

TWO COURSES

£6.95

~~~~~

SUNDAY LUNCH

TWO COURSES

CHOICE OF THREE ROASTS

+

CHOICE OF DESSERTS

£12.95

BOOKING ADVISABLE

## Yoga

In Much Dewchurch and Steiner Academy

Mondays 6.00—7.15

- ⇒ Tension and stiffness?
- ⇒ Back ache, backache, general aches and pains?
- ⇒ Difficulty sleeping?



Learn how to relax and let go. Discover how you can move more freely and improve your posture. A practical approach to yoga that is adaptable to anyone regardless of age or physical condition. All welcome

- ◆ Small group Classes
- ◆ Individual attention
- ◆ Connect with your breath
- ◆ Link simple movements for health and well-being
- ◆ Suitable for those recovering from injuries

Individual lessons also available

For more info contact Mike 01981 250341

Horse/pony/animal help available -

Very helpful, young, teenage, girls are looking to help on a local yard in exchange for a ride (or help with other animals for some pocket money)



07866 006582

## Meeting of the Hereford Civic Society

Thursday 21st March

7.30pm Kindle Centre besides Hereford ASDA, HR2  
7JE

## Hereford's Surprising Heritage

Illustrated talk by archaeologist Nigel Baker, co-author of the recently published book "Hereford Houses".

The surprising large number of historic houses in the City - perhaps the best kept secret in the Marches!  
Society Membership £15pa. Visitor: £3 donation

## GARTH BRADBURY FENCING LTD

All types of fencing

Gates

Field Shelters

Timber Outbuildings

[www.gb fencing contractors.com](http://www.gb fencing contractors.com)

[garthbradburyfencing@hotmail.com](mailto:garthbradburyfencing@hotmail.com)



Hereford Cathedral | 5 College Cloisters | Cathedral Close | Hereford | HR1 2NG  
[herefordcathedral.org](http://herefordcathedral.org)

## Tuesdays in Lent, 6.45 pm

During Lent, a sculpture entitled 'Jesus carries the Cross' by Lottie O'Leary will be exhibited in the South Transept. Each Tuesday in Lent will focus on a different interpretation of the sculpture and will be led by members of the cathedral community. Each will speak at 6.45 pm for around 15 minutes followed by Compline. We will gather for soup and rolls in the retro-choir following Evensong.

**12 March** – Lottie O'Leary

**19 March** – Canon Sandy Elliot

**26 March** – Simon Hudson

**2 April** – Canon Maureen Palmer

**9 April** - The Very Rev'd Nick Bury

## Thursday 21 March, 12 noon

### Choral Scholars Mass

Join us for our Choral Scholar's Mass in the Lady Chapel followed by a Lent lunch in College Hall. Lunch will be served

**arts alive** **FLICKS IN THE STICKS** at Much Birch Community Hall

**BORDERLINES FILM FESTIVAL 2019**

**Thursday 14th March - THE SEAGULL 12A**  
A superb ensemble cast plays out the famously layered saga of art, fame and human folly in this impressive version of Anton Chekhov's *The Seagull*. A group of friends and family gather for a weekend on a picturesque country estate, but under a breezy social surface, worlds collide with claustrophobic intensity: ingénue Nina pines for fading actress Irina's partner Boris, while steward's daughter Masha fights her own battle with unrequited love.

**Saturday 16th March - A STAR IS BORN 15**  
Lady Gaga is a revelation in Bradley Cooper's sensational directorial debut; a powerful contemporary take on the tragic, four-times-filmed love story. Seasoned, self-destructive country musician Jackson falls for struggling singer Ally who has abandoned dreams of stardom until he coaxes her into the spotlight. But as her career takes off, the personal side of their relationship begins to suffer.  
Borderlines Tickets: £5/£4 Under 16s

*April to May...*  
**Tuesday 30th April - STAN AND OLLIE 12A**  
**Thursday 23rd May - THE WIFE 15**

Tickets available in advance or on the door - for further info or to book tickets [muchbirchflicks@hotmail.com](mailto:muchbirchflicks@hotmail.com) or 01981 540097

For further information about films and screenings visit [www.artsalive.co.uk](http://www.artsalive.co.uk) (online booking available!)

with musical entertainment. There are limited places available for the lunch. To book your place, please contact Erica on 01432 374259 or

[erica.manley@herefordcathedral.org](mailto:erica.manley@herefordcathedral.org)

## Saturday 23 March, 7.30 pm

### Hereford Choral Society present Bach's Mass in B minor

A glittering compilation of J S Bach's 'greatest hits', completed towards the end of his life, including several skilful revisions of music from his earlier works.

Tickets £10 - £25, available from The Courtyard, Hereford, unreserved tickets available from the Cathedral Shop

Please send copy for the April Newsletter to

[editorial@birchesnews.org.uk](mailto:editorial@birchesnews.org.uk) or written contributions to Liz Hall at Walmere, Wrigglebrook, Kingsthorpe HR2 8AW.

—by 18th March please.



A New Yoga and Movement Studio  
for Hereford.

CLEAR SPACE STUDIOS  
let movement be your medicine

WHAT'S ON AT CLEAR SPACE?

So many kinds of Yoga!

Dance

Meditation

Mindfulness

Pilates

Tai Chi

Weekend Workshops

Craft Groups

Community Meet Ups

Singing

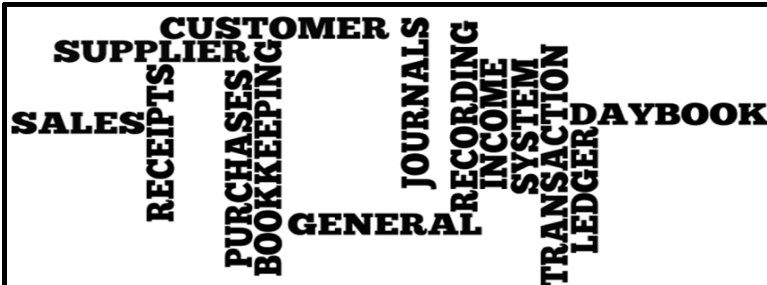
Space for Hire for Groups

..and the list just keeps getting longer!

Daytime, evening and weekend groups.

Visit our website for much more information

www.clearspacestudios.co.uk



**EJ PARTINGTON BOOKKEEPING**

Bookkeeping & Accounting Specialist

Woodfield, Hollybush Lane, Much Birch, HR2 8HX

07989 854593 / 01981 541109

[emmadeer@hotmail.co.uk](mailto:emmadeer@hotmail.co.uk)

Bookkeeping	VAT Returns
Invoicing	Management Accounts
Payroll	Self-Assessment Returns

Emma Partington has over 10 years experience in the finance industry both in practice and in industry, a local business that is able to help with all your bookkeeping needs.

**Call or e-mail today for a no obligation discussion about your requirements.**

**Self-storage  
Herefordshire**

£15 per week—no VAT  
20ft x 8ft

7 Days a week access  
Long or short term rental.

**Seasoned  
Firewood for Sale**

**George Cole**

**Mob: 07800952317**

**Tel: 01981241274**



**Ping's**

*Hairdressing & Barbers*

*Experienced hairdresser and stylist located in own salon at Thorn Lodge, Aconbury Close (old Post Office site).*

*Home visits can also be arranged. Weekend and evening appointments available.*

*Reasonable rates. Fully C&G and NVQ certified.*

*For appointments and further information*

*Ring Mobile 07450 343454*

*Or Home 01981 540876*

## Events in March 2019

ROSS LIBRARY DEVELOPMENT GROUP invites all interested to a Talk on Tuesday evening March 19th 2019 7.00 for 7.30 p.m. at Ross Library. There will be several speakers from the ROSS MEN'S SHED and they will bring some examples of the things they make/mend. Entry £5.00 for non RLDG Members, and £4 for members. Students free. All the funds raised go towards providing items for the Library. See details on the website [www.rldg.org.uk](http://www.rldg.org.uk)

ROSS SCIENCE SOCIETY will be holding the March illustrated Talk on the **second** Wednesday in the month, 13th March 2019, 7.00 for 7.30 p.m. at the Castle Lodge Hotel, Wilton. The Speaker will be Dr. Brian Williams and his topic will be 'Wandering Continents, the Evolution of the Atlantic Ocean'. Entry £4.00 p.p. or £16. for the annual subscription. Students Free. All are welcome. There is additional parking opposite the Hotel entrance.

For details see the website:  
[www.rosssciencesociety.org.uk](http://www.rosssciencesociety.org.uk)

ROSS CIVIC SOCIETY's Members and friends will be having an illustrated Talk at the Larruperz Community Centre, Ross, on Wednesday 13th March 2019 on 'The History of Troy House, Monmouth' with the speaker Dr. Ann Benson. The Talks begin at 7.30 p.m. but the room is open for refreshments from 7.00 p.m. Entry is free for Members £5.00 for visitors. Subscriptions are £15.00 p.p. or £25.00 for joint membership. For more details contact the Secretary on 01989 562424

### A CALL FOR HELP.....

We are looking for volunteers to go on a monthly rota to help us keep Much Birch Churchyard tidy. We do have someone to mow the grass regularly but we need volunteers to generally tidy up e.g. sweep the path, get rid of weeds and accumulated rubbish in the corners and remove dead flowers from graves. We would be so grateful for this help and you do not have to be members of the congregation. Please contact the Churchwarden, Sylvia Jones tel. 01981 540980 if you can help.

### Need some Domestic Help?

**Experienced Nanny/carer/cleaner/pet sitter available for £10 per hour.**

**Call Karen 01981 540710 or 07866 626531**  
**Own transport**



## NORTHERN HARMONY.

Based in Vermont USA, Northern Harmony's brilliant young singers have won a worldwide reputation for their remarkable command of harmony singing styles from across the globe: South African songs and dances, traditional music from Corsica, Georgia and the Balkans, American shape-note singing, and renaissance works.

**Steiner Academy Hereford  
Birch Hall**

**Thursday 14 March  
Concert 7:30 pm**

Tickets: Adult £10, student/child £5

Refreshments available during interval

To book tickets:  
School Reception: 01981 540221  
Contact: [david.mace@steineracademyhereford.eu](mailto:david.mace@steineracademyhereford.eu)

### LocalCarer

**Over15 years of experience**

For all aspects of care  
within the comforts of your  
own home



Call Kim for advice

07944 745853



FB: Murphy's Paw  
Doggie Services

[murphypaw2005@gmail.com](mailto:murphypaw2005@gmail.com)

Tump Lane, Much Birch  
Tel: Tricia 07732 286069

[www.murphypaw.co.uk](http://www.murphypaw.co.uk)

*Providing a true "home from home" environment.*

*We welcome friends, old and new!*



## Jargon-free Computer Help



### **Computer Tuition, Technical Support and Buying Advice.**

Local, friendly help with  
no jargon and  
reasonable rates

---

**Ben Roberts**  
**07702 760789**  
[ben.roberts@outlook.com](mailto:ben.roberts@outlook.com)



[www.greenleafarchitecture.co.uk](http://www.greenleafarchitecture.co.uk)  
E. [info@greenleafarchitecture.co.uk](mailto:info@greenleafarchitecture.co.uk)  
Tel. 01981 257180 M. 07946457251

Friendly and reliable, chartered Architectural Practice based in  
Wormelov.

All Architectural work undertaken. General advice; Planning  
applications; Detailed design for Building control and Tender;  
Project management



Longtown Historical Society Monday 4 March  
7.30pm, Longtown Village Hall

**PROFESSOR HELEN NICHOLSON (CARDIFF UNI-  
VERSITY): "KNIGHTS TEMPLAR AND KNIGHTS  
HOSPITALLER IN THE MARCHES"**

Guests £3, Membership, (until July) £5. Contact  
[jeremy.milln@gmail.com](mailto:jeremy.milln@gmail.com) for information

### **AN INVITATION TO JOIN**

#### **KILPECK ART CLUB**

Our Spring season begins on 25 February 2019  
and ends on 17 June, with breaks for bank  
holidays. **We meet on Mondays from 2pm–  
4pm, in Kilpeck Village Hall.** There is a small  
membership charge to cover hall hire. We are  
always pleased to see new members, including  
those who want to try painting for the first time.  
Just come along for a free taster session.

For information contact Jenny Davies,

[jen64davies@gmail.com](mailto:jen64davies@gmail.com),

or Margaret Bircher,

[tandmbircher@btinternet.com](mailto:tandmbircher@btinternet.com)

Herefordshire Wildlife Trust have many local events  
scheduled throughout 2019.

If you would like to receive updates each month  
regarding events in your area please let us know. If  
yes, please let us know your preferred contact name  
and email address.

Kind regards

Reception

The Herefordshire Wildlife Trust Limited

t: 01432 356872

e: [enquiries@herefordshirewt.co.uk](mailto:enquiries@herefordshirewt.co.uk)

w: [www.herefordshirewt.org](http://www.herefordshirewt.org)

# Great Local Food & Drink in Much Birch

All Day Every Day



## New Year Update

Thank you to everyone who contributed to a great 2018 here at the Pilgrim, we are all delighted to have made so many new friends and met some longstanding ones again.

I'm sure you will be as pleased as we are that we have a refurbishment programme underway and we will have some gorgeous, **individually designed** rooms available from the end of January. We have contracted an exciting interior designer, who has worked on some prestigious projects in the past and our "Country Collection" of mainly **King sized** rooms will be a fabulous addition to the Hotel. The rooms are being decorated and furnished in a comfortable country style with new furniture, curtains and lighting all to match the brief.

[For those with a good memory, rooms 12-17 on the first floor of the red brick extension, all with stunning views are the first ones to be re-decorated and re-furnished].

We are offering these rooms to our previous guests at "pre-launch" prices so please grab a great deal and come back to the Wye Valley soon.

Best wishes & Happy New Year

Steve & your Team

Menus on website [www.pilgrimhotel.co.uk](http://www.pilgrimhotel.co.uk)

Booking is recommended - 01981 540742

*The Pilgrim Hotel*

*Much Birch HR2 8HU*

*Email [stay@pilgrimhotel.co.uk](mailto:stay@pilgrimhotel.co.uk)*

## POLISHED NAIL & BEAUTY LOUNGE

*"Where friends and beauty meet...."*



A GIRL SHOULD BE TWO THINGS

*Classy & Fabulous*

\*Coco Chanel

OPI MANICURES \* PEDICURES \* GEL POLISH \* SCULPTURED ACRYLIC/  
GEL NAIL EXTENSIONS \* BEACH/HOLLYWOOD TOES \* SIGNATURE  
EYEBROWS—SCULPT, COLOUR AND CORRECT \* THREADING \*  
\*WAXING \* SEMI PERMANENT EYELASHES

REGULAR AESTHETIC CLINICS WITH Dr Sarah Parkes

GENTLEMANS LOUNGE HELD EVERY TUESDAY AFTERNOON FROM 2-5PM

'The Wood Shed'

Pengethley Garden Centre, Peterstow, Ross on Wye, HR9 6LL

Email [Polished.jacqueline@gmail.com](mailto:Polished.jacqueline@gmail.com)



Polished-Nail And Beauty

01989 730791 or 0775913783

OPEN: TUESDAY-SATURDAY 9am-5pm. Complimentary Tea and Coffee

Herefordshire

Advanced Drivers



better, safer

### Feel safer, driving in today's traffic . . .

Join in one of our **Driver Refresher Days** which aim to help you feel more confident and enjoy driving more by:

- getting up to date with the rules of the road
- learning safer driving tips and techniques
- putting them into practice in your own car

Or assess how good your driving is on an informal **FREE** Assessment Drive. No testing involved.

We hold these popular events throughout the year, from locations including Much Birch, Hereford, Leominster, Ledbury and Ross-on-Wye. Group discounts apply.

For details please contact our:  
**Events Coordinator on 01981 540382** or email [events@advanced-drivers.org.uk](mailto:events@advanced-drivers.org.uk) or take a tour round our website:  
<https://advanced-drivers.org.uk>



**Ring 01981 540382 today**

We are your local Road Safety Charity (Reg. no. 049679).  
Official Provider of the IAM RoadSmart Advanced Driver Course

### Aconbury Shepherd Huts



**Our huts are hand built to the highest of standards. Our standard hut includes insulation, double glazing, electrics and decoration.**

**Uses include craft room, play house, sleep over's etc.**

**Come and see our display hut or request our new brochure**

**We also build stables, field shelters, garden sheds, play houses, garden features and bespoke gates. Please ring for our dedicated brochure**

**Stephen Turner. The Underhills, Hollybush Lane, Much Birch, Herefordshire. HR2 8HX.**

**Telephone: Office 01981 540090  
Mobile 07768 206296**

**[www.aconburyshepherdhuts.co.uk](http://www.aconburyshepherdhuts.co.uk)  
[turnersofcrossways@btinternet.com](mailto:turnersofcrossways@btinternet.com)**

POST OFFICE

## About Us

Carrot&Wine Stores is brand new to the Hereford area.

Our family run company aims to offer all the convenience and family friendly service of a local store with the added benefit of locally sourced produce.

We stock local groceries, meats and cheese to local award winning cider, wine and all the daily essentials such as bread, milk, eggs and newspapers.

Open 7 days from 7am to 9pm  
Find us at **Wormelow on the A466!**

(Postcode for Sat Nav: HR2 8EJ)

CARROT & WINE  
STORES  
— — — — —  
WORMELOW



*18 year old babysitter available weekdays/ weekends. £6 an hour. Ring 07909 940916 for more details.*

*Cecily Daffern*

**Linedance classes in MBCH every Wednesday evening.. 7.30pm-9.30pm...£4.00 Not suitable for absolute beginners Contact Jean Harris on 07506718907 for further details or pop along to one of our classes**





**Much Birch Parish Council**  
Parish Clerk Mrs Alison Wright  
Longfield House, Gooses Foot,  
Kingstone, Herefordshire HR2 9NE  
Tel. 01981 250860  
Email: [muchbirchclerk@gmail.com](mailto:muchbirchclerk@gmail.com)

**Neighbourhood Development Plan – Much Birch Parish**

**CONSULTATION DAY**

There will be a further **Consultation Day**, to which all are invited, on **Saturday 16<sup>th</sup> March 2019 from 10.00am to 4.00pm** when there will be the opportunity to see how things have progressed to date. Refreshments will be served and all are welcome to come along to see how the plan is progressing, to ask any questions plus find out information.

Please also see below for future Steering Group Meeting dates:

**Dates of Neighbourhood Plan Steering Group Meetings for 2019. All to be held at Much Birch Community Hall from 7.30pm**

28 February, 28 March, 2 May, 30 May, 27 June, 29 August, 26 September, 31 October, 28 November.

Please remember that your opinion, and any input to the plan, is welcomed at all stages of the process. Meetings are public and open to all.

**Much Birch Community Hall 100 Club**

Results of the 100 club draw which took place on 11<sup>th</sup> February 2019 in the Community Hall are as follows:

1 <sup>st</sup> prize – No. 21	2 <sup>nd</sup> prize - No. 36	3 <sup>rd</sup> prize - 90
Mr. E. Joseph	Mr. T. Wylor-Owen	Mrs. B. Connolly
Much Birch	King's Thorn	Wormelow

The next draw will take place on 14<sup>th</sup> March 2019 at 10.30am in Much Birch Community Hall.  
John Jones- Promoter

**Defibrillation Training.**

‘When seconds count for a second chance’

A training session has been arranged for Saturday, 13<sup>th</sup> April 2019 at Much Birch Community Hall at 10am until 11.30am. It will be conducted by an Ambulance Service Training Officer and will be open to any member of the community who would like to attend. Further details, if required, from me on Tel: 01981 540980

John H.C.Jones—Chairman  
Much Birch Community Hall Management Committee

**Much Birch Village Market**

Will be held on Friday 22<sup>nd</sup> March at 2.30pm until 4.30pm. in Much Birch Community Hall Please come and support it. Refreshments will be available

[www.bgbuk.com](http://www.bgbuk.com)

[info@bgbuk.com](mailto:info@bgbuk.com)

**Your one-stop design and planning solution**

With over 10 years Industry experience

- Planning Drawings & Applications
- Architectural Drawing & Design
- Homes, extensions & listed buildings
- Repair & Conservation of Historic Buildings
- Historic & Timber Building Survey & Consultancy

**We specialise in Planning drawings/applications**

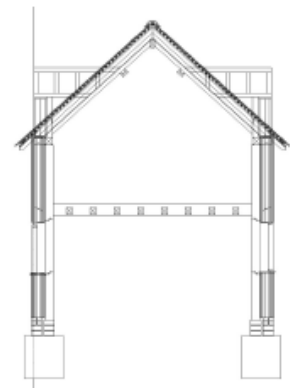
**& 3D architectural design.**



Design & Consultancy

[www.bgbuk.com](http://www.bgbuk.com) [info@bgbuk.com](mailto:info@bgbuk.com)

**Tel: 01432 607 407**



# THE CASTLE INN @ LITTLEBIRCH

## NEW OPENING TIMES

Monday—fish and chip night 5pm - 11pm

Tuesday—pizza night 5pm - 11pm

Wednesday—steak night 5pm - 11pm

Thursday—pie night 5-11pm

Friday 5-11pm

Saturday all day

Sunday lunch 12-4pm

*Evening menu is also available on the different food nights*



Seb and Emma welcome you to the Castle Inn for home cooked food, real ale and friendly atmosphere!

**New pub number; 01981540943**

***Call for any information and bookings!***

# healthyfeet

mobile clinic

## Mobile Foot Clinic

Experienced, Fully Qualified and Registered  
Foot Health Practitioners, First Aid Trained  
and DBS Police Checked

- Nail Trimming
- Thickened Nails
- Corns
- Callus (hard skin)
- Cracked Heels
- Verrucas
- Fungal Nails & Infections
- Ingrown Toenails
- Diabetic Foot Care



Checked ✓  
Disclosure &  
Barring Service



**Sophie Limming Dip FH MCFHP MAFHP**  
Qualified & Registered Foot Health Practitioner

**Tel: 0749 309 2960**

sophie@healthyfeetclinic.co.uk www.healthyfeetclinic.co.uk



## HOLLYBUSH HIRE

*Vintage Tea Set Hire*

*Woodfield, Hollybush Lane, Much Birch, HR2 8HX*

*07989 854593 / 01981 541109*

*[emmadeer@hotmail.co.uk](mailto:emmadeer@hotmail.co.uk)*

*Tea Cups, Saucers & Tea Plates*

*Sandwich / Cake Plates*

*Teapots, Sugar Bowls & Milk Jugs*

*Cake Stands*

*Lanterns, Mirrors*

Improve flexibility, build strength and develop control and endurance

# PILATES

with Alison Allan

Little Dewchurch Village Hall  
(3 miles from the A49,  
between Hereford and Ross)

Mondays (am) and Wednesdays (pm)

Telephone: 01432 840491

Email: [alisonpilates2016@gmail.com](mailto:alisonpilates2016@gmail.com)



STOTT PILATES<sup>™</sup>  
merrithew CORPORATION

## décor solutions

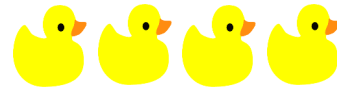
Tim Jones  
Painter and Decorator



Kings Thom, Herefordshire, HR2 8AW  
Tel: 01981 540242 Mob: 07810 895355  
[tjsj@me.com](mailto:tjsj@me.com)

Three generations of experience specialising in Painting and Decorating services.  
General property maintenance duties carried out.  
Fully insured. Good competitive rates.  
A high standard of workmanship and customer satisfaction guaranteed.

## WYE BATHROOMS



Local family run company. Design & installation of  
Bathrooms & shower rooms

We are also registered with NIC-EIC for all your Electrical  
work

Call Paul for a free quotation

Or visit

[www.wyebathrooms.co.uk](http://www.wyebathrooms.co.uk)

07894-563897



## W.M. PARTINGTON

### GENERAL BUILDER

- MINI-DIGGER & EXCAVATOR HIRE

RENOVATIONS	ROOFING	UPVC WINDOWS
BARN	CONCRETING	AND DOORS
CONVERSIONS	PLASTERING	BRICKWORK
NEW BUILD	GROUNDWORK	STONEMWORK
EXTENSIONS		

RING FOR A QUOTATION

MUCH BIRCH  
07774 805369 / 01981 541109

# AQUASSIST

## LIQUID WASTE SOLUTIONS

### Septic Tanks & Treatment Plants

- emptying
- servicing
- jetting
- installations
- blocked drains
- emergencies

Locally based company  
01432 353 888  
[book@aquassist.co.uk](mailto:book@aquassist.co.uk)  
[www.aquassist.co.uk](http://www.aquassist.co.uk)





Your Little Birch Parish Council Councillors are:-

CLlr Ben Roberts	Chairman	07702 760789	b3nroberts@gmail.com
CLlr Peter Rees		01981 541356	pandrees@gmail.com
CLlr Mike Morley		01981 541027	morley04@globalnet.co.uk
CLlr Annette Wissler		Contact through the clerk	
CLlr Janet Gwinnett		01981 540651	janetgwinnett@hotmail.com
Angela Middleton	Volunteer Foot Paths Officer	01981 540377	ajbmiddleton@hotmail.co.uk
Sophie Glover	PC Clerk	01432 617306	lbpcclerk@gmail.com

The February Parish Council meeting was attended by all Councillors, and the footpath officer was also in attendance. Angela had led a very popular parish walk on the first weekend of the month, and she offered to lead another group walk next month, the date and time will be published on the Parish website.



**New bike racks at Kingsthorpe bus shelter.**

With thanks to assistance from Lifecycle UK, Little Birch Parish Council have been able to provide two new bike racks to help to secure your bicycles when you catch the bus from Kingsthorpe.

With thanks to Much Dewchurch PC who have allowed the racks to be placed on their land, we all hope that cyclists feel encouraged to combine pedal power with public transport as the weather warms up.

Parish Council meetings usually happen at 7.30pm on the first Wednesday of the month and all parishioners are very welcome to attend. Agendas are posted on the Parish notice board at least three days in advance and are also on our web site.

Thank you.

Mrs Sophie Glover, Little Birch Parish Clerk, [lbpcclerk@gmail.com](mailto:lbpcclerk@gmail.com)

Website: [www.littlebirchparishcouncil.org](http://www.littlebirchparishcouncil.org)

**R&R  
FIREWOOD**

*Well seasoned hardwood  
Cut to any size  
Delivered to your door*

**STEPHEN or TARA**  
**Tel: 01432 870282**



**Little Birch Parish Facebook Group**



Find the latest news, events and business listings all in one place.  
You are welcome to promote your local business, advertise a local event or post news or information of interest to the village and surrounding area.  
Search for *Little Birch Parish Group* on Facebook

**Much Birch Parish Council**  
Parish Clerk Mrs Alison Wright  
Longfield House, Gooses Foot, Kingstone, Herefordshire HR2 9NE  
Tel. 01981 250860: Email: [muchbirchclerk@hotmail.co.uk](mailto:muchbirchclerk@hotmail.co.uk)

17th February 2019

**PARISH MEETING** - at the Parish Council Meeting held on the 7<sup>th</sup> February 2019 at the Much Birch Community Hall. The Parish Council received an update on the parish footpaths from the new Footpath Officer Steve Owens. This was most welcome, and very informative, and will assist with keeping the paths in a serviceable condition. There was also an update regarding plans for building a house at the Poor's Acre Field on Hollybush Lane. Finally, a reminder of a forthcoming **Consultation Day for the emerging Neighbourhood Plan**, to which all are invited, on Saturday 16<sup>th</sup> March 2019 from 10.00am to 4.00pm when there will be the opportunity to see how things have progressed to date. Do come along to find out more. Refreshments will be served.

Please also see below for future Steering Group Meeting dates:

**Dates of Neighbourhood Plan Steering Group Meetings for 2019**  
**All to be held at Much Birch Community Hall from 7.30pm**

28 February, 28 March, 2<sup>nd</sup> May, 30 May, 27 June, 29 August, 26 September, 31 October, 28 November.

A reminder that the dates for the 2019 Parish Council Meetings are as follows: March 7, April 4, May 9, June 6, July 4, September 5, October 3, November 7 and December 5.

The next meeting of the Parish Council will be held on **Thursday 7<sup>th</sup> March 2019 from 7.30pm** - at The Much Birch Community Hall.

Please see notice boards and website for agendas. As always the public and press are more than welcome to attend and will have the opportunity to speak directly to their representatives.

A reminder that:-

**Your Much Birch Parish Councillors are:-**

Cllr Alison Cook (Chair) Jasmine Cottage, Wrigglebrook Lane, Kingsthorpe, Hereford, HR2 8AW, e mail [thecooks@wyenet.co.uk](mailto:thecooks@wyenet.co.uk) Tel. 01981 540703  
Cllr Steve Turner (Vice Chair) The Underhills, Hollybush Lane, Much Birch, Hereford, HR2 8HX, e mail [turnersofcrossways@btinternet.com](mailto:turnersofcrossways@btinternet.com) and Tel. 01981 540090

Cllr Andrew Crum Anfield House, Barrack Hill, Kingsthorpe, Hereford, HR2 8AX, e mail [a.crum@btinternet.com](mailto:a.crum@btinternet.com)  
Tel. 01981 540002

Cllr Roisin Burge The Old Hall, Barrack Hill, Little Birch, Herefordshire, HR2 8AX [roisinburge@hotmail.com](mailto:roisinburge@hotmail.com) Tel. 01981 540724

Cllr David Baldwin The Granary, Much Birch, Herefordshire, HR2 8HS [baldwin79@btinternet.com](mailto:baldwin79@btinternet.com) Tel. 01981 541198

Cllr Rosemary Rigby MBE Cartref, Tump Lane, Wormelow, Herefordshire, HR2 8HN Tel. 01981 540477

Full minutes of the meetings and information etc. can be found on the Parish Council website following the link found in this summary. [www.muchbirchparish.org.uk](http://www.muchbirchparish.org.uk).

You can also find us on Twitter at <https://twitter.com/MuchBirchPC> and Facebook at <https://www.facebook.com/groups/Much.Birch.Parish>

---

## South Hereford Rural Safer Neighbourhood Team (SNT)

Lowri Anderson PCSO 40247

Hereford City Southside and Rural SNT

West Mercia Police

Get in touch

101 to talk to your local SNT or report a crime

[herefordsouthside.snt@westmercia.pnn.police.uk](mailto:herefordsouthside.snt@westmercia.pnn.police.uk)

[www.westmercia.police.uk](http://www.westmercia.police.uk)

Herefordshire Cops / @southsidecops

Only call 999 in an emergency, when a crime is in progress or life is in danger.

For daily updates on incidents in your area register for our Dotmailer service via [www.westmercia.police.uk](http://www.westmercia.police.uk).



### Make the difference

For more information about becoming a Special Constable, please visit,

**Warwickshire Police:** [www.warwickshire.police.uk/specialconstables](http://www.warwickshire.police.uk/specialconstables)

**West Mercia Police:** [www.westmercia.police.uk/specialconstables](http://www.westmercia.police.uk/specialconstables)