



THE ***Birches***

**A NEWSLETTER FOR KINGSTHORN,
MUCH BIRCH, LITTLE BIRCH & ACONBURY**

First published 1977 **October 2018**

Little Birch Drama Group—Auditions

Auditions for the next Little Birch
Panto

“HARLEQUIN AND COLUMBINE”



will take place at Little Birch Village Hall on Friday 19th
October from 6pm onwards.

Performances will take place over three nights and
one matinee in late January 2019—dates to be
confirmed.

Panto is written and directed by Frank Ryding

Everyone of all ages interested in getting involved in
the production in any capacity is invited to attend on
the evening. We need actors, technical assistance,
costume and props resource and production, help
with running ticket production and sales and bar staff.
We hope to see you there.

Diary Dates

September 2018

28th Village Market MBCH

October 2018

3rd LBirch Parish Council Meeting LBVH

4th Coffee Morning LBVH 10.30am

4th “Artspace” LBVH 3pm

4th Much Birch Parish Council MBCH

6th Parish Walk LBVH 9am

9th Whist Drive LBVH 7.30pm

16th Pudding Evening LBVH 7pm

18th Flicks in the Sticks MBCH 7.30pm

19th Panto Auditions LBVH 6pm

20th Book Club Methodist Hall 10am

26th Village Market MBCH

31st Gardening Club LBVH 7.30pm

Local News

After many years of keeping an eye on our community and
reporting local news for the Newsletter, John Bryant is taking a,
well earned, rest

We are therefore asking everyone to send any news to the
editor (editorial@birchesnews.org.uk) for inclusion in the next
edition. We need copy by 18th of each month for the following
publication.

News of new neighbours, achievements, forthcoming events,
children arriving or anyone departing—whether to another
part of this world or another world altogether. All welcome.

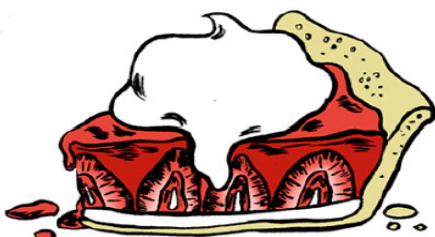
LITTLE BIRCH VILLAGE HALL

AUTUMN PUDDING EVENING

TUESDAY 16TH OCTOBER AT 7PM

**JOIN US FOR AN INDULGENT EVENING
OF WARMING PUDDINGS AND GOOD
COMPANY.**

**JUST £5 ENTRANCE FEE, AND EAT AS
MANY PUDDINGS AS YOU LIKE!**



**TEA, COFFEE & SOFT DRINKS INCLUDED
YOU ARE WELCOME TO BRING YOUR OWN ALCOHOLIC DRINKS**

Much Birch Surgery will be holding its annual flu
clinics on the **6th & 20th October 2018, 8.30-11am** at **Much Birch
Community Hall.**

As per previous years, eligible patients will need to collect their
flu invitations before attending either of the clinics. These
invitation letters are available to collect from Reception now.

PLEASE NOTE: Due to restrictions on vaccine deliveries only
invited patients will be eligible to have their vaccine at the
clinics this year and any other patients will be able to book into
the surgery to have their vaccine after the 20th October 2018

Little Birch Village Hall Committee

Newsletter notices for October 2018

Coffee Morning

The next coffee morning will be on **Thursday 4th October 10:30am - 12:30pm** at **Little Birch Village Hall**.

Join us and enjoy a cup of tea or coffee, some cake or a biscuit. Make new friends or catch up with old friends, have a chat and find out more about the local community and let us know your thoughts and suggestions as to how we can develop these regular meetings.

If you need help with transport please contact Margaret: 01981 540374

Whist Drive

We guarantee a warm welcome and a fun evening with good company at our monthly whist drive whatever your ability. Excellent prizes and refreshments too.

Our next **Whist Drive** will be on **Tuesday 9th October** at Little Birch Village Hall. We start at **7.30 pm** and the entrance fee is just £2.00.

Community Book Exchange/Lending Library

The next Book Exchange will be on the morning of **Saturday 20th October** at the former Methodist Chapel opposite the Village Hall **10am – 12noon**.

All members of the community are invited to join us for this enjoyable monthly event which offers not only a wide range of books and DVDs (to suit all ages and interests) but also an opportunity to meet others and exchange recommendations for a good read.

There is a charge of just £1 per adult towards the cost of the hire and refreshments.

Pudding Evening

Tuesday 16th October at **7pm** at Little Birch Village Hall.

Other events in October

Auditions for 2019 Pantomime
19th October 2018 from 6pm at the Village Hall

AN INVITATION TO JOIN KILPECK ART CLUB

Our new season began on 17 September 2018 and continues most Mondays until December. We meet on Mondays from 2pm–4pm, in Kilpeck Village Hall. There is no formal tuition but we all encourage each other and have an enjoyable afternoon. To cover the cost of hall hire there is a small membership charge. We are always pleased to see new members, including those who want to try painting for the first time. The first session you come to is free. Contact Jenny Davies e-mail jen64davies@gmail.com, or Margaret Bircher at tandmbircher@btinternet.com. We look forward to seeing you soon

Local News

Lydia Heyes (Innisfree) gained A star , A and B. She is going to York University to study English and Linguistics.

Also.

Gardener required to help maintain mature borders. Knowledge of plants would help. No grass cutting required. Please phone 07460 382410 if you can help.



No Stress, No Worries,

Glazy Days

- ◆ **CONSERVATORIES**
- ◆ **WINDOWS**
- ◆ **DOORS**
- ◆ **FASCIAS**
- ◆ **SOFFITS**
- ◆ **GUTTERS**

◆ **ALSO MISTED UNITS RE-**

01981 541121
07818 611010
www.glazydays.net
Email: sales@glazydays.net

Parish Field – HELP PLEASE

A dwindling group of us have been giving the field its annual trim for the last five years and, with our advancing years, are finding it increasingly hard work. Last year it was only 4 of us. We would be most grateful for some extra help. It is not much of a commitment – just one morning a year. All you need is a strimmer and/or a rake. Many hands make light work!!

I am sure you would all like to see the field cared for, it gives pleasure to locals and people passing by. If the wild flowers are to continue to grow, annual strimming is necessary. It helps distribute seed and gives some of the plants a head start in the spring.

If you would like to help please ring Alison on 540791 to arrange a suitable date for all – weather permitting!

Thank you

LONGTOWN AND DISTRICT HISTORICAL SOCIETY

**MONDAY OCTOBER 1, 7.30pm LONGTOWN
VILLAGE HALL**
**ELERI LYNN: THE CONSERVATION OF THE
BACTON ALTAR CLOTH Membership £10**
Guests £3 per meeting

Much Birch Village Markets

The dates for 2017 are as follows: September 28th,
October 26th, November 23rd, December 14th.



St Michael's Hospice
Always a place of light and love

Lottery:

Thank you to all our generous supporters who bought tickets for this year's St Michael's Summer Draw.

Thanks to all your support, the draw has raised over £37,000 which is already making a real difference to the amount of care St Michael's can provide for the local community.

If you missed out on the Summer Draw you can always try our weekly Hospice Lottery Draw.

With a first prize of £1,000, and 23 other cash prizes every week, it is one of the most profitable Hospice Lotteries around.

So, if you want a taste of that Friday feeling, while helping your Hospice, sign up now to play the Lottery from just £1 a week.

You can sign up by calling 01432 851 000 or by downloading an application form from the Hospice's website at www.st-michaels-hospice.org.uk

Aconbury Shepherd Huts



Our huts are hand built to the highest of standards. Our standard hut includes insulation, double glazing, electrics and decoration.

Uses include craft room, play house, sleep over's etc.

Come and see our display hut or request our new brochure

We also build stables, field shelters, garden sheds, play houses, garden features and bespoke gates. Please ring for our dedicated brochure

Stephen Turner. The Underhills, Hollybush Lane, Much Birch, Herefordshire. HR2 8HX.

**Telephone: Office 01981 540090
Mobile 07768 206296**

**www.aconburyshepherdhuts.co.uk
turnersofcrossways@btinternet.com**

arts
alive

**FLICKS
IN THE
STICKS**

**at Much Birch
Community Hall**

Thursday 18th October, 7.30pm - THE GUERNSEY LITERARY AND POTATO PEEL PIE SOCIETY 12A

Based on the bestselling novel, *Lily James* plays free-spirited writer Juliet Ashton, who forms a life-changing bond with the eccentric Guernsey Literary and Potato Peel Pie Society, when she decides to write about the book club they formed during the occupation of Guernsey during WWII. From the producers of *The Best Exotic Marigold Hotel*, and with an all-star British cast, comes a compelling romantic drama with an intriguing mystery at its heart. *Starring Lily James, Matthew Goode, Michiel Huisman*

Coming up...

- Saturday 17th November, 6.00 pm - **THE GREATEST SHOWMAN - SING-A-LONG!** PG
- Thursday 22nd November, 7.30 pm - **PHANTOM THREAD** 15
- Tuesday 4th December, 7.30 pm - **MAMA MIA! HERE WE GO AGAIN** PG

Refreshments including hot dogs available from 7pm (5.30pm for 17/11).

Tickets £4.50 (£3.50 under 16s)

Tickets available in advance or on the door - for further info or to book tickets muchbirchflicks@hotmail.com or 01981 540097

For further information about films and screenings visit www.artsalive.co.uk (online booking available!)

Church Services September 2018

**September 30th
(18th Sunday after Trinity)**



10.30 a.m. Much Birch Group Service with Archdeacon Derek (new Archdeacon of Hereford)

**BRENDAN MORRIS
CONSTRUCTION & CARPENTRY
SPECIALISING IN uPVC
WINDOWS, DOORS &
CONSERVATORIES**

call now for a free quotation
on; 07855760912
email

Ross Library Development Group: All are welcome to attend the Talk on Tuesday evening, 16th October, 2018, 7.00 for 7.30 in Ross Library when craftswoman, Eleanor Kercher, will demonstrate her work with wood and also tell us about the varied skills of her colleagues in 'Made in Ross'. Entry is £4.00 for RLDG Members, and £5.00 for non-members, students free. All funds raised go to provide facilities in the Library. Refreshments are available for a donation. For further details see the website www.rldg.org.uk

Ross Science Society: The monthly meeting will be held on Wednesday 3rd October. 7.00 for 7.30 p.m. at the Castle Lodge Hotel, just off the Wilton roundabout. Geologist, Dr. Dave Green, will describe the momentous movements in the part of the Earth's crust of the Earth on which our island is located; 700 million years ago this formed part of a chain of volcanic islands lying near the Antarctic Circle..come and learn more. Entry £4.00 p.p. or £16 annual subscription. Students free. Additional parking is available opposite the Hotel entrance. For further details see the website: www.rosssciencesociety.org.uk or ring the Secretary on 01989 720539

Ross Civic Society: An illustrated talk will be given by local historian, Heather Hurley, on Wednesday 10th October, 7.00 for 7.30 p.m. at the Larruperz Community Centre, Ross. The topic will be the '1929 Survey of Ross Buildings'. Photographs taken then will be compared with contemporary ones. Entry £5. for visitors, Free for members (Annual subscription is £15.00 individual and £25. Joint). Refreshments available. For further enquiries ring 01989 562424

Ross Arts Appreciation Society: All interested are welcome to attend the meeting on Friday 5th October 7.00 for 7.30 p.m. at the Larruperz Centre, Ross, when David Harrison will give an illustrated talk on 'William Hogarth, a Cartoonist's Progress'. Entry is £2.50 for members (annual subscription £10.) and £4.50 for visitors. Refreshments are provided. For further information ring the Chair on 01989 720539

A CALL FOR HELP.....

We are looking for volunteers to go on a monthly rota to help us keep Much Birch Churchyard tidy. We do have someone to mow the grass regularly but we need volunteers to generally tidy up e.g. sweep the path, get rid of weeds and accumulated rubbish in the corners and remove dead flowers from graves. We would be so grateful for this help and you do not have to be members of the congregation. Please contact the Churchwarden, Sylvia Jones tel. 01981 540980 if you can help.

ARTSPACE



Are you a budding artist or would be artist? Maybe you've dabbled in the past and want to get back into it? Or perhaps you want to get started but can't seem to get round to it?

ARTSPACE could be just what you need! Whatever your ability level, you will be most welcome!

ARTSPACE is an opportunity for like minded people to come along to share a place and time to do their art... whether it be sketching, painting or other paper based art work. You will need to bring your own materials and have your own project in mind.

It will be held at **Little Birch Village Hall on Thursday afternoons 3-5pm from 4th October – 8th November** (6 weekly sessions).

Cost will be £3 per person. Refreshments will be provided.

If you are interested please ring Maz Jooma on 541 048

History Group Visit

A number of the group plus others had an interesting visit on August 23rd in good weather. We all enjoyed a visit to Grosmont Castle which, judging by the remains and the reconstruction drawing, must have been a cosy little castle! We also went in the church which has a huge empty nave separated from the rest of the church and obviously used for events. We went on to Skenfrith Castle which is rather larger than Grosmont with an almost complete curtain wall but nothing much remaining inside apart from a circular keep. Out through the Watergate we came very close to the Monnow which forms the boundary between England and Wales here and which the castle was built to defend. The old mill attached to the wall has the remains of a mill wheel and leat.

After lunch at The Bell (a little pricey but huge helpings) we moved on to Garway church which has a large square tower, built for retreat from danger, and which used to be separate from the church. The original nave was circular as it was built by the Knights Templar and remains were seen outside. The interior is simple with many interesting features, a very old altar stone and original pews among them. There are the remains of buildings in a neighbouring field, possibly of the Templar's monastery and farm. The church is some distance from the present Garway village. We were able to have a look at the ancient dovecote nearby which is apparently one of the oldest in the country dating back to the 1300s and which is looked after by English Heritage and the owner of the land.

We still have a few copies of our book "Little Birch on Aconbury Hill" left if you are beginning to think of Christmas presents!

There are some talks planned for next year and we hope to arrange one for this year. Watch this space!

MUCH BIRCH PARISH COUNCIL

Some Information about Fireworks and Bonfires

Hosting a fireworks party

If you have a safe place to do so and want to celebrate with fireworks in the comfort of your own garden or on other private land (with the landowner's permission), there's nothing to stop you and there's no reason why you can't enjoy a great evening. But remember that both you and your guests will need to take care.

These tips are to help you think about and prepare for a fun and safe celebration at home.

Plan ahead:

Fireworks must be stored safely, in a closed box, somewhere cool and dry, out of reach of children and animals, until the time they are needed. Don't keep the box under the stairs or in a passageway.

Do you have a large enough space to let fireworks off safely? Each firework should have a minimum safety distance marked on it.

Be considerate to your neighbours: warn them beforehand so they can take in their washing, close windows, keep their pets indoors and, if necessary, take other precautions.

Why not invite them?

Only buy fireworks from reputable dealers. The fireworks should have the product safety marking BS7114 or equivalent and carry a CE mark.

Most shops have only been given permission to sell fireworks on or between these dates:

15 October to 10 November, 26 to 31 December plus 3 days before Diwali and Chinese New Year

To buy fireworks at other times, you must go to specially licensed shops.

Fireworks cannot be let off between 11pm and 7am except on:

Bonfire Night (5 November), when the cut off is midnight;
New Year's Eve, Diwali and Chinese New Year, when the cut off is 1am.

Party time:

Fireworks must only be handled and lit by responsible adults.

Alcohol and fire don't mix – nor do alcohol and fireworks. Keep fireworks in a closed box well away from the bonfire or any other sources of heat or fire.

Follow the instructions on each firework. Different fireworks can present different hazards and so the instructions vary.

Use a torch if you read the instructions in the dark – do not use a naked flame.

Let fireworks off one at a time.

Do not throw fireworks – it is highly dangerous.

Light them at arm's length, using a taper.

Never play with fireworks – they are explosives and can hurt you.

When you are watching fireworks, stand well back.

Never go near a firework that has been lit. Even if it hasn't gone off, it could still explode.

Hold sparklers one at a time in gloved hands at arm's length. When the sparkler goes out, it is still very hot so put it end down in a bucket of water.

Never leave matches or lighters lying around

We recommend that you **do not use** sky lanterns as you have no control over them once they've been set off.

They can kill animals, litter the countryside and start fires. If you do choose to set them off, always follow the manufacturers' guidance/instructions carefully.

Clearing up:

Pick up the spent firework cases – they can still be dangerous. Look for fireworks with a torch. Use tongs or some other suitable tool and wear heatproof gloves.

Don't allow children to collect firework cases.

If any firework looks as if it hasn't gone off after at least half an hour, soak it in water to prevent it reigniting.

Having a bonfire

A bonfire is a great way to celebrate Bonfire Night, but do follow these safety tips:

You can't get rid of household waste on the bonfire if it will cause pollution or harm people's health. You should always burn dry material as it produces less smoke.

Never burn treated wood, rubber, plastic, foam or paint.

Warn your neighbours beforehand so they can take in any washing, close windows, keep pets indoors and take other necessary precautions.

Much Birch WI

Much Birch WI meets on the third Tuesday of each month in Much Birch Community Hall, just off the A49. The Hall is next door to the surgery and both are signed from the road.

Please contact Sallie on 01432
340069
for further details.

theWI
INSPIRING WOMEN

AQUASSIST

LIQUID WASTE SOLUTIONS

Septic Tanks & Treatment Plants

- emptying
- servicing
- jetting
- installations
- blocked drains
- emergencies

Locally based company
 01432 353 888
 book@aquassist.co.uk
 www.aquassist.co.uk



Improve flexibility, build strength and develop control and endurance

PILATES

with Alison Allan

Little Dewchurch Village Hall
 (3 miles from the A49,
 between Hereford and Ross)

Mondays (am) and Wednesdays (pm)

Telephone: 01432 840491

Email: alionpilates2016@gmail.com



STOTT PILATES
merrithew GROUP



Little Birch & Aconbury
 NEIGHBOURHOOD PLAN



THE AXE & CLEAVER

Much Birch, Hereford, Herefordshire. HR2 8HU
 Tel No: 01981 540203
 Proprietors Andy & Sue Hoare

WEEKLY SPECIALS

MONDAY –FRIDAY LUNCHTIME SPECIAL
TWO COURSES
£9.95

~~~~~  
**WEDNESDAY**  
**SENIOR CITIZENS' LUNCH**  
**TWO COURSES**  
**£6.95**

~~~~~  
SUNDAY LUNCH
TWO COURSES
CHOICE OF THREE ROASTS
 +
CHOICE OF DESSERTS
£12.95

BOOKING ADVISABLE

Little Birch & Aconbury Joint Neighbourhood Development Plan Draft Plan

The revised draft plan, following the comments from our Public Consultation was approved in July by both parishes. We are now awaiting a final decision by Herefordshire Council.

When the plan has been through a number of further checks it will reach its final stage – **The Referendum**. A majority of those who vote will need to agree with the Plan for it to be finalised.

Aconbury and Little Birch Neighbourhood Development Plan 2011 -2031 will then come into use with regards to all Herefordshire Council planning decisions for both Aconbury and Little Birch.

For updates and notifications of future meetings please check out the website – www.littlebirchparishcouncil.org.

**BAYLEY'S
WINDOW CLEANING
SERVICE**

WATER FED POLE AND TRADITIONAL

WE ALSO CLEAN:-

- ⇒ GUTTERS AND FACIAS
- ⇒ CONSERVATORY ROOFS

FREE QUOTATIONS

* REFERENCES CAN BE GIVEN *

* ESTABLISHED IN AREA *

PHONE ANDREW

HOME: 01432 508979

MOBILE: 07771 870891

Email: bayleyscleaning@gmail.com

Self-storage Herefordshire

£15 per week—no VAT
20ft x 8ft

7 Days a week access
Long or short term rental.

Seasoned Firewood for Sale

George Cole

Mob: 07800952317

Tel: 01981241274

Email: coleg600@gmail.com

MUCH BIRCH COMMUNITY HALL PRESENTS

'KEEP CALM & CARRY ON'

WITH

KEITH NICHOLS

Saturday 10th November - 7.30pm

Keith Nichols, one of the foremost and respected authorities on Classic Jazz & Ragtime music is returning to Much Birch as we remember **Britain at war**. He will be entertaining us with his unique rendition of music made popular in the eras of World War I & World War II. Keith, a remarkable jazz pianist performs at all the major jazz festivals & lectures at The Royal Academy, he also enjoys playing the piano to accompany silent films and will explain how different accompaniments were provided for silent movies as well as performing songs and piano solos from the wartime eras.

An evening not to be missed!

Doors open 7.00pm

Entrance £10.00 to include a 'Wartime' bread and cheese supper

Licensed Bar

Tickets available on the night or, to book in advance phone Carole 01981 540095 or Bryony 01981 540097

Proceeds to Much Birch Hall Community Hall Development Fund



www.greenleafarchitecture.co.uk

E. info@greenleafarchitecture.co.uk

Tel. 01981 257180 M. 07946457251

Friendly and reliable, chartered Architectural Practice based in Wormelov.

All Architectural work undertaken. General advice; Planning applications; Detailed design for Building control and Tender; Project management



Murphy's Paw

The home of happy woofers!

Doggie Daycare

One to One Grooming

Home Boarding

Tump Lane, Much Birch

Tel: Tricia 07732 286069

murphypaw2005@gmail.com

www.murphypaw.co.uk

Providing a true "home from home" environment.

We welcome friends, old and new!

FB: Murphy's Paw

Doggie Services



Great Local Food & Drink in Much Birch

All Day Every Day



PILGRIM
HOTEL



VALLEY
RESTAURANT

Serving Great Local Food & Drink

Breakfast * Morning Coffee * Lunch

Afternoon Tea * Dinner * Celebration Meals

Conferences * Private Dining * Murder Mystery Dinners

Menus on website www.pilgrimhotel.co.uk

Booking is recommended - 01981 540742

POLISHED NAIL & BEAUTY LOUNGE

'Where friends and beauty meet....'



A GIRL SHOULD BE TWO THINGS..
Classy & Fabulous
- COCO CHANEL

- * OPI MANICURES * PEDICURES * GEL POLISH * SCULPTURED ACRYLIC/GEL NAIL EXTENSIONS
- * BEACH/HOLLYWOOD TOES * SIGNATURE EYEBROWS – SCULPT, COLOUR AND CORRECT
- * THREADING * WAXING * SEMI PERMANENT EYE LASHES

REGULAR AESTHETIC CLINICS WITH Dr Sarah Parkes

GENTLEMANS LOUNGE HELD EVERY TUESDAY AFTERNOON FROM 2-5PM

'The Wood Shed'

PENGETHLEY GARDEN CENTRE, Peterstow, Ross on Wye, HR96LL

Email: Polished.jacqueline@gmail.com  Polished-Nail And Beauty

01989 730791 or 07759131783

OPEN: TUESDAY – SATURDAY 9am-5pm. Complimentary Tea and Coffee

TEA ON THE TRAIL

AT ST MARY'S CHURCH, LITTLE BIRCH

Refreshments for walkers

Enjoy a break for a cup of tea or coffee



Donations to cover costs and for much needed renovation work at St Mary's Church.

Thank you

Please send copy for the November Newsletter to editorial@birchesnews.org.uk or written contributions to Liz Hall at Walmere, Wrigglebrook, Kingsthorpe HR2 8AW.

—by 18th October please.

Little Birch Gardening Club News

We are being entertained on WEDNESDAY 31st OCTOBER by our own 'new' chairperson, Janet Gwinnett, on her 'First Year of Retirement for a Gardener'. (Now there's a thought - do we ever really retire!) What a year to choose - this one should be interesting on how she overcame (or not) the challenges - looking forward to this. Trying something different, in June the club hosted an evening of 'Nature in Music and Verse'. We were musically entertained by Cantando, a group of eight enthusiastic guitar players. Their repertoire is classically based with a few modern pieces. This was interspersed with poems and readings theme linked to a celebration of gardening and nature. It was a super evening, enjoyed by all who attended and, of course, a hearty ploughmans supper went down very well.



About Us

Carrot&Wine Stores is brand new to the Hereford area.

Our family run company aims to offer all the convenience and family friendly service of a local store with the added benefit of locally sourced produce.

We stock local groceries, meats and cheese to local award winning cider, wine and all the daily essentials such as bread, milk, eggs and newspapers.

Open 7 days from 7am to 9pm

Find us at Wormelow on the A466!

(Postcode for Sat Nav: HR2 8EJ)

CARROT & WINE
STORES
——
WORMELOW

If you require any information about the guitar group, or indeed would like to join them, then give Lesley Chapman (musical director) a call or see her at any of our meetings.

We are a very friendly group and would love to see some new faces who would be made most welcome. Come along to any of our meetings held in the Village Hall at Little Birch, usually the last Wednesday of every month starting at 7.30 pm, refreshment available and a good chat!

Looking forward to seeing you.

Jenny Baldwin - on behalf of LBGC Committee

Walks

The Bird Walk was well attended and thanks to Adrian Hodges, and Bob Mason and John Penrice, we identified birds in Athelstan's Wood. We agreed to do a Dawn Chorus Walk next April when we will hear many more.

And the next walk is...

Parish Walk - Little Birch and Little Dewchurch Saturday 6 October

A circular walk with a 2 point entry!

9am Little Birch village hall

10am Little Dewchurch village hall

Refreshments at LBVH and afterwards the Little Dewchurch group will return back through Athelstan's Wood with Sue Mason.

All welcome! (from these or other parishes)

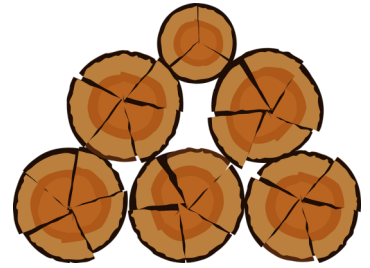
Angela Middleton

01981540377

ajbmiddleton@hotmail.co.uk

Voluntary Footpath Officer

The log sales are back!



Worcestershire Wildlife

Trust's log sales start for the autumn/winter on 29th & 30th September at **Tiddesley Wood**, near Pershore. The sales take place from the barn, which is about 300m from the main car park entrance.

Did you know that all of the wood sold at Tiddesley Wood is from our nature reserves and that the removal of some trees creates open habitat for a variety of wildlife? Not only that, all profits from the sales come back to the Trust to help fund future work - it's a win-win situation.

You can come along either day from 10am through to 1.00pm and pick up bags at £5.50 each or get loose logs packed into your boot or trailer - a price will be worked out for you at the time based on £110 per cubic metre.

You can come along either day from 10am through to 1.00pm and pick up bags at £5.50 each or get loose logs packed into your boot or trailer - a price will be worked out for you at the time based on £110 per cubic metre.

www.bgbuk.com

info@bgbuk.com

Your one-stop design and planning solution

With over 10 years Industry experience

- Planning Drawings & Applications
- Architectural Drawing & Design
- Homes, extensions & listed buildings
- Repair & Conservation of Historic Buildings
- Historic & Timber Building Survey & Consultancy

We specialise in Planning drawings/applications

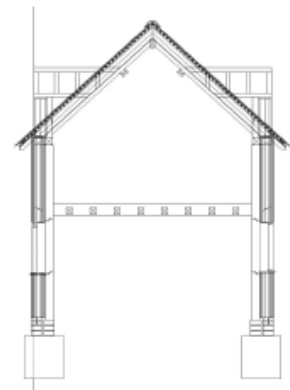
& 3D architectural design.



Design & Consultancy

www.bgbuk.com info@bgbuk.com

Tel: 01432 607 407





HOLLYBUSH HIRE

Vintage Tea Set Hire

Woodfield, Hollybush Lane, Much Birch, HR2 8HX

07989 854593 / 01981 541109

emmadeer@hotmail.co.uk

Tea Cups, Saucers & Tea Plates

Sandwich / Cake Plates

Teapots, Sugar Bowls & Milk Jugs

Cake Stands

Lanterns, Mirrors

R&R FIREWOOD

Well seasoned hardwood

Cut to any size

Delivered to your door

STEPHEN or TARA

Tel: 01432 870282



W.M. PARTINGTON

GENERAL BUILDER

- MINI-DIGGER & EXCAVATOR HIRE

RENOVATIONS
BARN
CONVERSIONS
NEW BUILD
EXTENSIONS

ROOFING
CONCRETING
PLASTERING
GROUNDWORK

UPVC WINDOWS
AND DOORS
BRICKWORK
STONEMASONRY

RING FOR A QUOTATION

**MUCH BIRCH
07774 805369 / 01981 541109**



THE CASTLE INN @ LITTLE BIRCH

OPENING TIMES



Mon & Tues: closed

Wed: 6pm - 11pm

Thurs: 6pm - 11pm

Fri: 6- 11pm

Sat: 12pm- 3pm. 6pm-12pm

Sun: 12pm- 6pm

Seb and Emma welcome you to the Castle Inn for home cooked food, real ale and friendly atmosphere!

New pub number; 01981540943

Call for any information and bookings!

CUSTOMER
SUPPLIER
SALES
RECEIPTS
PURCHASES
BOOKKEEPING
JOURNALS
RECORDING
INCOME
SYSTEM
TRANSACTION
LEDGER
GENERAL
DAYBOOK

EJ PARTINGTON BOOKKEEPING

Bookkeeping & Accounting Specialist

Woodfield, Hollybush Lane, Much Birch, HR2 8HX

07989 854593 / 01981 541109

emmadeer@hotmail.co.uk

Bookkeeping	VAT Returns
Invoicing	Management Accounts
Payroll	Self-Assessment Returns

Emma Partington has over 10 years experience in the finance industry both in practice and in industry, a local business that is able to help with all your bookkeeping needs.

Call or e-mail today for a no obligation discussion about your requirements.

healthyfeet

mobile clinic

Mobile Foot Clinic

Experienced, Fully Qualified and Registered
Foot Health Practitioners, First Aid Trained
and DBS Police Checked



- Nail Trimming
- Thickened Nails
- Corns
- Callus (hard skin)
- Cracked Heels
- Verrucas
- Fungal Nails & Infections
- Ingrown Toenails
- Diabetic Foot Care



Sophie Limming Dip FH MCFHP MAFHP
Qualified & Registered Foot Health Practitioner

Tel: 0749 309 2960

sophie@healthyfeetclinic.co.uk www.healthyfeetclinic.co.uk

Jargon-free Computer Help



Computer Tuition, Technical Support and Buying Advice.

Local, friendly help with
no jargon and
reasonable rates

Ben Roberts
01981 540100
07702 760789

décor solutions

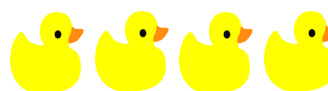
Tim Jones
Painter and Decorator



Kings Thorn, Herefordshire, HR2 8AW
Tel: 01981 540242 Mob: 07810 895355
tjsj@me.com

Three generations of experience specialising in Painting and Decorating services.
General property maintenance duties carried out.
Fully insured. Good competitive rates.
A high standard of workmanship and customer satisfaction guaranteed.

WYE BATHROOMS



Local family run company. Design & installation of
Bathrooms & shower rooms



We are also registered with NIC-EIC for all your Electrical
work

Call Paul for a free quotation

Or visit

www.wyebathrooms.co.uk

07894-563897



EMMA BRADBURY EQUINE

Mobile horse clipping services
Horse sitting / Holiday Cover
Or just an extra pair of hands!

25 years experience with horses
Fantastic references available

01981 541385 : 07725 536648

01981 541385 : 07970 346460

*18 year old babysitter available weekdays/
weekends. £6 an hour. Ring 07909 940916 for more
details.*

Cecily Daffern

Little Birch Parish Council

Your Little Birch Parish Council Councillors are:-

CLr Ben Roberts	Chairman	01981 540100	b3nroberts@gmail.com
CLr Steve Naylor		01981 541323	steve.naylor5@btinternet.com
CLr Mike Morley		01981 541027	morley04@globalnet.co.uk
CLr Annette Wissler		Contact through the clerk	
CLr Janet Gwinnett		01981 540651	janetgwinnett@hotmail.com
Angela Middleton	Volunteer Foot Paths Officer	01981 540377	ajbmiddleton@hotmail.co.uk
Sophie Glover	PC Clerk	01432 270499	littlebirchpcclerk@hotmail.co.uk

The September Parish Council meeting was attended by 4 Councillors, with CLr Wissler unwell and unable to join the meeting, and the volunteer tree warden also in attendance. Angela offered to lead another group walk this October, this time walking to Little Dewchurch and back – more details will be on the website.

Little Birch Parish Council are looking for some one to act as their Voluntary Tree Warden, hopefully this will not be an arduous task, especially if you are already some one who likes to get out and about around our Parish – it is just keeping an eye out for trees that might be diseased or at risk along our footpaths, and letting the clerk know about them. Our footpath officer has been covering the role for a year and she is happy to pass on her knowledge to the next volunteer. If you are interested, please contact our clerk for a chat.

Parish Council meetings usually happen at 7.30pm on the first Wednesday of the month and all parishoners are very welcome to attend. Agendas are posted on the Parish notice board at least three days in advance and are also on our web site.

Thank you.

Mrs Sophie Glover, Little Birch Parish Clerk, The Orchard, Ridgehill, Hereford HR2 8AG

Website: www.littlebirchparishcouncil.org

Little Birch Parish Facebook Group



Find the latest news, events and business listings all in one place.

You are welcome to promote your local business, advertise a local event or post news or information of interest to the village and surrounding area.

Search for *Little Birch Parish Group* on Facebook

Yoga



In Much Dewchurch and Steiner Academy

Mondays 6.00—7.15

- ⇒ Tension and stiffness?
- ⇒ Back ache, backache, general aches and pains?
- ⇒ Difficulty sleeping?

Learn how to relax and let go. Discover how you can move more freely and improve your posture. A practical approach to yoga that is adaptable to anyone regardless of age or physical condition. All welcome

- ◆ Small group Classes
- ◆ Individual attention

GARTH BRADBURY FENCING LTD

All types of fencing

Gates

Field Shelters

Timber Outbuildings

www.gb fencing contractors.com

garthbradburyfencing@hotmail.com

01981 541385 : 07970 346460

17th September 2018

PARISH MEETING - at the Parish Council Meeting held on the 6th September 2018 at the Much Birch Community Hall. The signs for Forge Lane and advisory HGV signage had been erected. It was hoped that this would help with locating the road but also warning of the unsuitability of the road for large vehicular traffic.

The Parish Council is still seeking a new Footpath Officer. Please contact the Clerk, or one of the councillors, for more information about the role of Footpath Officer.

The future Much Birch Parish Council Meeting dates for 2018 are as follows: October 4th, November 8th and December 6th.

The next meeting of the Parish Council will be held on **Thursday 4th October from 7.30pm** - at The Much Birch Community Hall.

Please see notice boards and website for agendas. As always the public and press are more than welcome to attend and will have the opportunity to speak directly to their representatives.

A reminder that:-

Your Much Birch Parish Councillors are:-

Cllr Alison Cook (Chair) Jasmine Cottage, Wrigglebrook Lane, Kingsthorpe, Hereford, HR2 8AW, e mail thecooks@wyenet.co.uk Tel. 01981 540703
Cllr Steve Turner (Vice Chair) The Underhills, Hollybush Lane, Much Birch, Hereford, HR2 8HX, e mail turnersofcrossways@btinternet.com and Tel. 01981 540090

Cllr Andrew Crum Anfield House, Barrack Hill, Kingsthorpe, Hereford, HR2 8AX, e mail a.crum@btinternet.com
Tel. 01981 540002

Cllr Roisin Burge The Old Hall, Barrack Hill, Little Birch, Herefordshire, HR2 8AX roisinburge@hotmail.com Tel. 01981 540724

Cllr David Baldwin The Granary, Much Birch, Herefordshire, HR2 8HS baldwin79@btinternet.com Tel. 01981 541198

Cllr Rosemary Rigby MBE Cartref, Tump Lane, Wormelow, Herefordshire, HR2 8HN Tel. 01981 540477

Full minutes of the meetings and information etc. can be found on the Parish Council website following the link found in this summary. www.muchbirchparish.org.uk.

You can also find us on Twitter at <https://twitter.com/MuchBirchPC> and Facebook at <https://www.facebook.com/groups/Much.Birch.Parish>

South Hereford Rural Safer Neighbourhood Team (SNT)

Lowri Anderson PCSO 40247

Hereford City Southside and Rural SNT

West Mercia Police

Get in touch

101 to talk to your local SNT or report a crime
herefordsouthside.snt@westmercia.pnn.police.uk
www.westmercia.police.uk

Herefordshire Cops / @southsidecops

Only call 999 in an emergency, when a crime is in progress or life is in danger.

For daily updates on incidents in your area register for our Dotmailer service via www.westmercia.police.uk.

Make the difference

For more information about becoming a Special Constable, please visit,

Warwickshire Police: www.warwickshire.police.uk/specialconstables

West Mercia Police: www.westmercia.police.uk/specialconstables



Where we work; South Wye SNT is based at South Wye Police Station, Goodrich Grove, Newton Farm, Hereford, HR2 7DB, we work around the areas of Rural: Aconbury; Allensmore; Ballingham; Bolstone; Callow; Dewshall; Dinedor; Garway; Grafton; Harewood; Haywood; Hentland; Holme Lacy; Kenderchurch; Kentchurch; Kilpeck; Kingstone; Little Birch; Much Birch; Little Dewchurch; Llandinabo; Llanwarne; Lower Bullingham; Much Dewchurch; Orcop; Pencoyd; Pontrilas; SDevereaux; St Weonards; Tretire with Michealchurch; Thrupton; Treville; Wormbridge; Wormelow.

Your team

Sgt Emma Freer, PC Roger Bradley, PC Jim Phillips, PCSO Lowri Anderson, PCSO Adam Westlake, PCSO Christina Howard, PCSO Christopher Yarwood.

About your team....Safer Neighbourhood Teams work with local people and partners to identify, tackle and solve issues that matter to the community where you live.

Making neighbourhoods safer by cutting day to day crime and anti-social behaviour is at the heart of keeping people in West Mercia safe.

