



# Newsletter for King's Thorn, The Birches & Aconbury

A newsletter for the villages of King's Thorn, Little Birch, Much Birch & Aconbury.

May 2018. First published 1977..

PETER & CHRIS DOWSETT

## Coffee Morning

We are raising money to support local clean water charity Hope Spring

*in aid of Hope Spring Water*

**MUCH BIRCH HALL** 12th May 2018 10am - 1pm

Come and have a cup of tea or coffee with delicious *homemade cakes*

Explore stalls selling local produce & all sorts inc:

- Local Fruit & Veg
- Vinyl Records & Collectables
- Plant Sale
- Fun Activities For Children
- Books & DVDs
- Raffle
- Lucky Dip

**Free ENTRY**

**A coffee morning full of fun for all the family**

**Tel. 01981 541 185**  
E. [pandc.dowsett@gmail.com](mailto:pandc.dowsett@gmail.com)

## Diary Dates

### April 2018

25th Gardening Club LBVH  
27th Village Market MBCH

### May 2018

2nd Parish Council Meeting LBVH  
3rd Coffee Morning LBVH  
3rd Parish Council Meeting MBCH  
4th-5th Plant Fair St Michaels Hospice  
8th Whist Drive LBVH  
8th Ward Councillor Surgery MBCH  
12th Coffee Morning MBCH  
12th Silver Branch Ceilidh Band.LBVH  
15th WI Meeting MBCH  
17th History Group LBVH  
18th Talk on Cider and Tasting MBCH  
19th Book Exchange Methodist Chapel  
20th Open Garden at Treberva  
22nd Flicks in the Sticks MBCH  
25th Village Market MBCH  
30th Gardening Club LBVH

### June 2018

7th Coffee Morning LBVH  
12th Whist Drive LBVH  
16th Book Exchange Methodist Chapel  
28th-30th Summer Show LBVH

## Church Services April/May 2018



**Sunday 29<sup>th</sup> April (5<sup>th</sup> Sunday of Easter )**  
Much Birch said Communion 9.15 a.m.

**Sunday 6<sup>th</sup> May (6<sup>th</sup> Sunday of Easter)**  
Holy Communion at St. Mary's, Little Birch at 11.00 a.m.

**Sunday 13<sup>th</sup> May (7<sup>th</sup> Sunday of Easter)**  
Family Communion at St. Mary and St. Thomas a Becket, Much Birch at 9.15 a.m.  
Morning Worship at St. Mary's, Little Birch at 11.00 a.m.

**Sunday 20<sup>th</sup> May (Pentecost)**  
Holy Communion at St. Mary and St Thomas a Becket, Much Birch at 9.15 a.m.

Traditional Communion at St. Mary's, Little Birch 11.00 a.m.  
Pentecost Family Celebration at Hereford Cathedral with workshops from 2.00 p.m. and a service at 3.30 p.m.

**Sunday 27<sup>th</sup> May (Trinity Sunday)**  
Morning Worship at St. Mary and St. Thomas a Becket, Much Birch at 9.15 a.m.

Please send copy for the June Newsletter to [editorial@birchesnews.org.uk](mailto:editorial@birchesnews.org.uk) or written contributions to John Bryant at Bramley Bungalow, Aconbury Close, King's Thorn.

—by 18<sup>th</sup> May please.



Congratulations are extended to John Gwinnett on the occasion of his wedding to Miss Aneesa Parry of Anglesey on 7th April. John is currently a Hawk Instructor at RAF Valley. The day was a success.

Congratulations also go to Lucy and Pete Hall on the birth of their second son, Jack Thomas, a brother for Henry. Another grandson for Lynnette Roberts.

A very warm welcome is given to the Hawkins family who have moved into 'Daneswood', the erstwhile home of the Palfreyman family. The family consists of parents Amelia and Nick with children Nathaniel, Ava and Joseph. We trust they will all be happy in their new home and will soon make lots of new friends.



Little Birch & Aconbury  
NEIGHBOURHOOD PLAN

**Little Birch & Aconbury  
Joint Neighbourhood Development Plan  
Draft Plan**

The Steering Group would like to thank all those who completed a **Consultation Draft Comments Form**. Our consultant Dr David Nicholson, has reviewed all those comments and is preparing a draft set of responses – including any necessary amendments to the Plan, so that he can give a report at the next **Steering Group Meeting**. This could possibly be in April – but no date has yet been set. As always, everyone will be welcome.

Anyone not yet registered please contact Sophie Glover – Clerk to LB&A Steering Group [littlebirchpcclerk@hotmail.co.uk](mailto:littlebirchpcclerk@hotmail.co.uk) for notifications of future meetings or check out the website – [www.littlebirchparishcouncil.org](http://www.littlebirchparishcouncil.org).

**Aconbury and Little Birch Neighbourhood Development Plan 2011 -2031** then has to go through a number of checks – including an independent examination.

The final stage will be a **Referendum**. A majority of those who vote need to agree with the Plan for it to be finalised and come into use.

**arts alive** **FLICKS IN THE STICKS** at Much Birch Community Hall

Tuesday 22nd May, 7.30 pm -

**GOODBYE CHRISTOPHER ROBIN PG**

After leaving London for the English countryside, writer A.A. Milne starts to spin fanciful yarns about his son's growing collection of stuffed animals. These stories form the basis for "Winnie-the-Pooh" and "The House at Pooh Corner," published respectively in 1926 and 1928. Milne and his family soon become swept up in the instant success of the books, while the enchanting tales bring hope and comfort to the rest of postwar England.

Tickets £4.50 (£3.50 under 16s)

Tickets available in advance or on the door - for further info or to book tickets please email [bryonyconnolly@hotmail.com](mailto:bryonyconnolly@hotmail.com) or call 01981 540097

For further information about films and screenings visit [www.artsalive.co.uk](http://www.artsalive.co.uk) (online booking available!)

**SUMMER SCREENING...**

We have a special Summer film screening on



Saturday 14th July (Bastille Day) of LES MISERABLES 12A.

French cheese and wine during the interval is included in the ticket price (£10, £5 children).



This will be a fundraiser for Much Birch Community Hall.

FLICKS IN THE STICKS

FLICKS IN THE STICKS

*Linedance classes in MBCH on Wednesday evenings. 7.30pm-9.30pm...£4.00 Not suitable for absolute beginners*

Contact Jean Harris c further details



- ◆ CONSERVATORIES
- ◆ WINDOWS
- ◆ DOORS
- ◆ FASCIAS
- ◆ SOFFITS
- ◆ GUTTERS

◆ ALSO MISTED UNITS REPLACED

01981 541121  
07818 611010

[www.glazydays.net](http://www.glazydays.net)  
Email: [sales@glazydays.net](mailto:sales@glazydays.net)

Put your kettle on  
for St Michael's Hospice



St Michael's Hospice  
Always a place of light and love

Hosting a Big Tea is a great reason to get together and raise money for your Hospice by doing something we all love - drinking tea and eating cake.

To get your Big Tea pack, call Gaynor on 01432 852 630 or visit [st-michaels-hospice.org.uk](http://st-michaels-hospice.org.uk)

Over the next few months, I'll be sending out area-specific Open Gardens information: keep your eyes peeled if you know you have one in the vicinity, and do let me know if you'd like information about any of our gardens in advance. If you'd like to have a look at what's coming up in the season, go to: <http://www.st-michaels-hospice.org.uk/event-type/open-gardens/>

Many thanks,

**Rachel Entwisle**

Communications Assistant

Direct tel 01432 852 655 Fax 01432 851 022

Email [rentwisle@smhospicehereford.org](mailto:rentwisle@smhospicehereford.org)

web [www.st-michaels-hospice.org.uk](http://www.st-michaels-hospice.org.uk)

## About Us

Carrot&Wine Stores is brand new to the Hereford area.

Our family run company aims to offer all the convenience and family friendly service of a local store with the added benefit of locally sourced produce.

We stock local groceries, meats and cheese to local award winning cider, wine and all the daily essentials such as bread, milk, eggs and newspapers.

Open 7 days from 7am to 9pm  
Find us at Wormelow on the A466!

(Postcode for Sat Nav: HR2 8EJ)

CARROT & WINE  
STORES



WORMELOW

## Open Gardens

### Colley Wells

**WHEN:** 20 May, 2018 | 11am-5pm **WHERE:** Treberva Fruit Farm, Much Birch, Herefordshire, HR2 8HU

**Treberva Fruit Farm lies just a stone's throw from the A49 between Hereford and Ross-on-Wye, but at Colley Wells you could easily be forgiven for thinking you are miles from the busy road.**

The working farm covers 100 acres of glorious Herefordshire countryside, with apple and pear orchards at every turn.

The garden at Colley Wells was created from scratch in 2014 and includes small slate and gravel gardens, a vegetable garden within old barn walls and wildlife pond and some surprises.

Take a walk beyond this to a lake before strolling around more orchards, through a nut platt, over a bridge crossing another small lake and return to enjoy tea and homemade cake in the garden.

Visitors may be lucky enough to enjoy a blossom walk should it be in bloom.

Adults £5, u12 free

*From Hereford, take the A49 to Much Birch. Pass the turning for the Community Hall and Church and after 100 metres turn right into Treberva Fruit Farm.*

*From the south, take the A49. After passing the Axe & Cleaver pub, go up the rise and roughly 50 metres after the bus stop on the right, turn left through double green gates into Treberva Fruit Farm.*

### GARTH BRADBURY FENCING LTD

All types of fencing

Gates

Field Shelters

Timber Outbuildings

[www.gb fencing contractors.com](http://www.gb fencing contractors.com)

[garthbradburyfencing@hotmail.com](mailto:garthbradburyfencing@hotmail.com)

01981 541385 : 07970 346460



# Little Birch Village Hall Committee

Newsletter notices for May 2018

## Coffee Morning

The next coffee morning will be on **Thursday 3<sup>rd</sup> May 10:30am - 12:30pm** at **Little Birch Village Hall**.

Join us and enjoy a cup of tea or coffee, some cake or a biscuit. Make new friends or catch up with old friends, have a chat and find out more about the local community and let us know your thoughts and suggestions as to how we can develop these regular meetings.

If you need help with transport please contact Margaret: 01981 540374

## Whist Drive

We guarantee a warm welcome and a fun evening with good company at our monthly whist drive whatever your ability. Excellent prizes and refreshments too.

Our next **Whist Drive** is on **Tuesday 8<sup>th</sup> May** at Little Birch Village Hall. We start at **7.30 pm** and the entrance fee is just £2.00.

## **WANTED**

### **Gardening help needed in Little Birch Area**

Weeding etc for approx 3-4 hours a week.

Someone knowledgeable about the difference between a weed and a plant.

Please contact: Lynda Tel: 01981 540512

## **Ross Meetings for May 2018**

**ROSS SCIENCE SOCIETY:** There will be no indoor Meeting/Lecture in May.

**ROSS CIVIC SOCIETY:** The illustrated Talk in May will be held on Wednesday 9th May 7.00 for 7.30 p.m. at the Larruperz Centre, Ross on Wye. The topic will be the **WORK OF THE WOODLAND TRUST** and the Speaker will be Roger Tolman. All interested are welcome. Entry for visitors £5.00 Members free. Annual subscriptions are Individual £15.00 Joint £25.00. For details ring the Secretary on 01989 562424.

**ROSS ARTS APPRECIATION SOCIETY:** All interested are welcome to attend the illustrated Lecture on Friday 4th May, 7.30 p.m. at the Larruperz Centre, Ross on Wye (Watkins Room) when the topic will be the **ARTIST VINCENT VAN GOGH** with Prof. Allan Fisher telling us about Van Gogh's life and, in particular, his friendship with Gauguin. A brief AGM, starting at 7.00 p.m. will precede the Lecture. Entry for Visitors £4.50, for Members £2.50; annual subscriptions are £10 p.a. For further details ring the Chair on 01989 720539

## Ceilidh

Celebrate the arrival of Spring and join us for a fun evening of dancing with the Silver Branch Ceilidh Band and Caller.

At **Little Birch Village Hall** on **Saturday 12th May 7.30pm – 10.30pm**

Bar and snacks available

All welcome (no previous dancing experience necessary)

Tickets £5.00 Children under 12 - £3.00

Tickets available from Linda 01981-540532, Angela 01981-540377 or Julie 01981-541080

## Community Book Exchange/Lending Library

The next Book Exchange will be on the morning of **Saturday 19<sup>th</sup> May** at the former Methodist Chapel opposite the Village Hall **10am – 12pm**.

All members of the community are invited to join us for this enjoyable monthly event which offers not only a wide range of books and DVDs (to suit all ages and interests) but also an opportunity to meet others and exchange recommendations for a good read.

There is a charge of just £1 per adult towards the cost of the hire and refreshments.

## Much Birch WI

Much Birch WI meets on the third Tuesday of each month in Much Birch Community Hall, just off the A49. The Hall is next door to the surgery and both are signed from the road.

Our open meeting on 17th April was a huge success and very well attended. We enjoyed enormously meeting the owls and learning about how they are looked after at Hereford Owl Rescue. There was one in particular who was fortunate not to be kidnapped!

The next meeting is on Tuesday 15th May

Visitors and potential new members are always welcome. Please contact Sallie on 01432 340069 for further details.

**theWI**  
INSPIRING WOMEN

## Much Birch Community Hall 100 Club

The April draw took place on on 8<sup>th</sup> April 2018 in Much Birch Community Hall at 10.30am and the results were as follows:

1<sup>st</sup> prize – 25

2<sup>nd</sup> prize - 60

Mr. C. Pickering-Grey

Mrs. C. Miller

Much Birch

Little Birch

The next draw will take place on 13<sup>th</sup> May 2018 in Much Birch Community Hall.

## KILPECK ART CLUB SPRING SEASON 2018

Our group meets in the Kilpeck Village Hall on Monday afternoons from 2-4 pm. Our first meeting this year is on 12 February and we continue until mid June.. We are always pleased to see new members, so please come along for a free taster session. For more information, contact

Jenny by e-mail at [jen64davies@gmail.com](mailto:jen64davies@gmail.com)

The Much Birch Parish Council Meeting dates for 2018 are as follows: May 3rd, June 7th, July 5th, no meeting in August, then September 6th, October 4th, November 8th and December 6th.

**Surgery with Ward Councillor 8th. May between 6pm and 7.15 pm at Much Birch Community Hall. Feel free to 'POP IN' or if you want to make an appointment email**

***david.harlow@herefordshire.gov.uk***

### History Group Film – Searching for the travelling people

On Thursday May 17<sup>th</sup> in Little Birch Village Hall at 7.30 there will be a showing of this film which was first shown at Borderlines Film Festival this year. The film was made with the help of Rural Media to celebrate 50 years since a programme on this topic was broadcast on BBC radio by Charles Parker. It was the first time anything was broadcast about gypsies and their way of life. The new film involved interviewing people who featured in the original programme and it provides a fascinating insight into the way of life and culture of the travelling people. Rich Matthews from Rural Media will introduce it and he is happy to answer questions afterwards.

Entry including light refreshments is £2.50



## CEILIDH

At Little Birch Village Hall  
WITH THE SILVER BRANCH CEILIDH BAND

Saturday 12<sup>th</sup> May  
7.30pm-10.30pm

Folk Duo, Alana and Alice  
will sing in the interval

Bar and snacks available  
All welcome

Tickets £5.00 Under 12s - £3.00

Book tickets in advance from Linda (01981-540532),  
Angela (01981-540377) or Julie (01981-541080)

**St Michael's:**  
**The story continues.....**



St Michael's Hospice  
Always a place of light and love

St Michael's Hospice Plant Fair  
Friday 4<sup>th</sup> and Saturday 5<sup>th</sup> May 11am-5pm  
Bartestree,  
Hereford,  
HR1 4HA

The second annual Plant Fair at St Michael's Hospice will be a celebration of the joy of gardening.

Plant lovers will have the chance to browse a wide range of herbaceous perennials, bedding plants, annuals, trees, shrubs, alpines, bulbs, carnivorous and indoor plants grown by professional and amateur gardeners.

Light refreshments will be available all day on both days. Two-course lunches will be served between 12pm and 2pm each day, no booking necessary.

St Michael's Hospice would like to thank all our green fingered community supporters who are busy in their gardens and greenhouses growing plants for sale at the Fair.

There is on-site parking at the Hospice, but please car-share if you can.

**Rachel Entwisle**

Communications Assistant

Direct tel 01432 852 655 Fax 01432 851 022

Email [rentwisle@smhospicehereford.org](mailto:rentwisle@smhospicehereford.org)

web [www.st-michaels-hospice.org.uk](http://www.st-michaels-hospice.org.uk)

Improve flexibility, build strength and develop control and endurance

# PILATES

with Alison Allan

Little Dewchurch Village Hall  
(3 miles from the A49,  
between Hereford and Ross)

Mondays (am) and Wednesdays (pm)

Telephone: 01432 840491

Email: [alionpilates2016@gmail.com](mailto:alionpilates2016@gmail.com)



STOTT PILATES  
merrithew

**AQUASSIST**  
LIQUID WASTE SOLUTIONS  
85 Aylestone Hill, Hereford. HR1 1HX

septic tank  
emptying  
treatment plants pumps

**0191 441888**

reliable service & advice

[WWW.AQUASSIST.CO.UK](http://WWW.AQUASSIST.CO.UK)  
the solution is clear

**Little Birch Gardening Club**

Meets on a regular basis at Little Birch Village Hall

April 25th Richard Baldwin will give a talk on 'Vegetables for the Small Garden,



And on May 30th, Ian Sadler's topic will be ' How your bedding plants are produced'

For further information contact

Lesley Chapman - 01981 541370/ 07834771838

**Send Ecards Online**

Send birthday greetings, thank you cards, Christmas greetings and other messages to your friends and family using our electronic cards (ecards) platform.

To send an ecard please visit

<https://ecards.hopespring.org.uk>

Donations to Hope Spring ecards supports

[www.hopespring.org.uk](http://www.hopespring.org.uk) . Registered charity number: 1165468.



## Murphy's Paw

The home of happy woofers!

Doggie Daycare

One to One Grooming

Home Boarding

Tump Lane, Much Birch

Tel: Tricia 07732 286069

[murphypaw2005@gmail.com](mailto:murphypaw2005@gmail.com)

[www.murphypaw.co.uk](http://www.murphypaw.co.uk)

*Providing a true "home from home" environment.*

*We welcome friends, old and new!*

FB: Murphy's Paw  
Doggie Services



## KILPECK EVENTS:

Our ART CLUB has been running in a beautiful setting in Kilpeck for over thirty years. We meet in the Kilpeck Village Hall on Monday afternoons from 2-4 pm and each year we have an autumn and spring/summer session.

We are always pleased to see new members. We don't have formal tuition but help and encourage each other. Please come along for a free taster session. We will be holding our biennial exhibition and sale in September.

**This year our first meeting is on 12 February, and will continue until the early summer.**

**For more information contact**

**[jen64davies@gmail.com](mailto:jen64davies@gmail.com)**

\*\*\*\*\*

**SITTING & STANDING GENTLE EXERCISE**  
Low impact, aerobic class for all ages, mobility, strength and tone.

**ZOE HOOPER (ETM Level 2) - #07870397352**  
**KILPECK VILLAGE HALL**

**TUESDAYS 10.45 – 11.45 (£5)**



## THE AXE & CLEAVER

Much Birch, Hereford, Herefordshire. HR2 8HU

Tel No: 01981 540203

Proprietors Andy & Sue Hoare

## WEEKLY SPECIALS

MONDAY –FRIDAY LUNCHTIME SPECIAL

**TWO COURSES**

**£9.95**

~~~~~

WEDNESDAY

**SENIOR CITIZENS' LUNCH**

**TWO COURSES**

**£6.95**

~~~~~

SUNDAY LUNCH

**TWO COURSES**

**CHOICE OF THREE ROASTS**

+

**CHOICE OF DESSERTS**

**£12.95**

BOOKING ADVISABLE

### Much Birch Village Markets

The dates for 2017 are as follows:

April 27<sup>th</sup>, May 25<sup>th</sup>, June 22<sup>nd</sup>, July 27<sup>th</sup>, August –no market, September 28<sup>th</sup>, October 26<sup>th</sup>, November 23<sup>rd</sup>, December 14<sup>th</sup>.

**Rural Hub**   
**Herefordshire**  
Helping Rural Businesses Thrive

Email: [admin@herefordshireruralhub.co.uk](mailto:admin@herefordshireruralhub.co.uk)

Tel: 01432 268 428

Website: [www.herefordshireruralhub.co.uk](http://www.herefordshireruralhub.co.uk)

Twitter: @Hfds\_RuralHub

You can also find us on Facebook by searching for 'Herefordshire Rural Hub'

**Herefordshire Rural Hub CIC**

Agriculture House  
Beech Business Park  
Tillington Road  
Hereford  
HR4 9QJ

Company Number: 7495168

## BRENDAN MORRIS

**CONSTRUCTION & CARPENTRY**  
**SPECIALISING IN uPVC**  
**WINDOWS, DOORS &**  
**CONSERVATORIES**

call now for a free quotation

on; 07855760912

email

[brendanmorris05@gmail.com](mailto:brendanmorris05@gmail.com)



# Great Local Food & Drink in Much Birch

All Day Every Day



PILGRIM  
HOTEL



VALLEY  
RESTAURANT

Serving Great Local Food & Drink

Breakfast \* Morning Coffee \* Lunch

Afternoon Tea \* Dinner \* Celebration Meals

Conferences \* Private Dining \* Murder Mystery Dinners

Menus on website [www.pilgrimhotel.co.uk](http://www.pilgrimhotel.co.uk)

Booking is recommended - 01981 540742

## POLISHED NAIL & BEAUTY LOUNGE

*'Where friends and beauty meet....'*



A GIRL SHOULD BE TWO THINGS..  
*Classy & Fabulous*  
- COCO CHANEL

- \* OPI MANICURES \* PEDICURES \* GEL POLISH \* SCULPTURED ACRYLIC/GEL NAIL EXTENSIONS
- \* BEACH/HOLLYWOOD TOES \* SIGNATURE EYEBROWS – SCULPT, COLOUR AND CORRECT
- \* THREADING \* WAXING \* SEMI PERMANENT EYE LASHES

REGULAR AESTHETIC CLINICS WITH Dr Sarah Parkes

GENTLEMANS LOUNGE HELD EVERY TUESDAY AFTERNOON FROM 2-5PM

'The Wood Shed'

PENGETHLEY GARDEN CENTRE, Peterstow, Ross on Wye, HR96LL

Email: [Polished.jacqueline@gmail.com](mailto:Polished.jacqueline@gmail.com)  Polished-Nail And Beauty

01989 730791 or 07759131783

OPEN: TUESDAY – SATURDAY 9am-5pm. Complimentary Tea and Coffee



*The Singing Tree is an informal fun singing group that started its life in Much Dewchurch, moved with us to Garway and we are now meeting in Kingsthorne since our move here in July last year. No auditions, no need to read music, just come along and enjoy yourself. We meet on Wednesdays at 7.30 pm at Wynds Poynt. For more information please contact Hilary on 01981 540022 the [turning@phonecoop.coop](mailto:turning@phonecoop.coop)*



## Yoga

In Much Dewchurch and Steiner Academy

Mondays 6.00—7.15



- ⇒ Tension and stiffness?
- ⇒ Back ache, backache, general aches and pains?
- ⇒ Difficulty sleeping?

Learn how to relax and let go. Discover how you can move more freely and improve your posture. A practical approach to yoga that is adaptable to anyone regardless of age or physical condition. All welcome

- ◆ Small group Classes
- ◆ Individual attention

## Aconbury Shepherd Huts



**Our huts are hand built to the highest of standards. Our standard hut includes insulation, double glazing, electrics and decoration.**

**Uses include craft room, play house, sleep over's etc.**

**Come and see our display hut or request our new brochure**

**We also build stables, field shelters, garden sheds, play houses, garden features and bespoke gates. Please ring for our dedicated brochure**

**Stephen Turner. The Underhills, Hollybush Lane, Much Birch, Herefordshire. HR2 8HX.**

**Telephone: Office 01981 540090  
Mobile 07768 206296**

**[www.aconburyshepherdhuts.co.uk](http://www.aconburyshepherdhuts.co.uk)  
[turnersofcrossways@btinternet.com](mailto:turnersofcrossways@btinternet.com)**



**DEAN & SUN**  
Solar Electric Installation

Offering a full range of electrical services and now specialising in the installation and maintenance of PV solar panels to generate electric for households and small businesses.

Please contact us for a free, no obligation site survey and quotation or to discuss your requirements in more detail. We aren't salesmen, we aren't working for anyone else, we aren't a regional office...

We are a Hereford based family run business who will offer the perfect balance of service, value and affordability to new and existing customers.

Please see our website for full details and updates on the changes to the Feed In Tariff or email us at [info@deanandsun.co.uk](mailto:info@deanandsun.co.uk) to receive our quarterly newsletter.

Tel: 01981 540030  
Mobile: 07818 847986  
Email: [info@deanandsun.co.uk](mailto:info@deanandsun.co.uk)  
[www.deanandsun.co.uk](http://www.deanandsun.co.uk)

FOR FUTURE GENERATIONS



## Self-storage Herefordshire

£15 per week—no VAT  
20ft x 8ft

7 Days a week access  
Long or short term rental.

## Seasoned Firewood for Sale

George Cole

Mob: 07800952317

Tel: 01981241274

Email: [coleg600@gmail.com](mailto:coleg600@gmail.com)



## HOLLYBUSH HIRE

*Vintage Tea Set Hire*

*Woodfield, Hollybush Lane, Much Birch, HR2 8HX*

*07989 854593 / 01981 541109*

*[emmadeer@hotmail.co.uk](mailto:emmadeer@hotmail.co.uk)*

*Tea Cups, Saucers & Tea Plates*

*Sandwich / Cake Plates*

*Teapots, Sugar Bowls & Milk Jugs*

*Cake Stands*

*Lanterns, Mirrors*

## R&R FIREWOOD

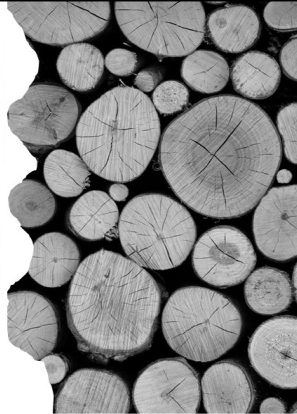
*Well seasoned hardwood*

*Cut to any size*

*Delivered to your door*

**STEPHEN or TARA**

**Tel: 01432 870282**



## W.M. PARTINGTON

### GENERAL BUILDER

- MINI-DIGGER & EXCAVATOR HIRE

RENOVATIONS  
BARN  
CONVERSIONS  
NEW BUILD  
EXTENSIONS

ROOFING  
CONCRETING  
PLASTERING  
GROUNDWORK

UPVC WINDOWS  
AND DOORS  
BRICKWORK  
STONEMWORK

**RING FOR A QUOTATION**

**MUCH BIRCH**  
**07774 805369 / 01981 541109**



**THE CASTLE INN @ LITTLE BIRCH**

## OPENING TIMES



Mon & Tues: closed

Wed: 6pm - 11pm

Thurs: 6pm -11pm

Fri: 6- 11pm

Sat: 12pm- 3pm. 6pm-12pm

Sun: 12pm- 6pm

Seb and Emma welcome you to the Castle Inn for home cooked food, real ale and friendly atmosphere!

New pub number; 01981540943

*Call for any information and bookings!*

**SUPPLIERS**  
**SALES**  
**RECEIPTS**  
**PURCHASES**  
**BOOKKEEPING**  
**CUSTOMER**  
**JOURNALS**  
**RECORDING**  
**INCOME**  
**SYSTEM**  
**TRANSACTION**  
**LEDGER**  
**GENERAL**  
**DAYBOOK**

### EJ PARTINGTON BOOKKEEPING

Bookkeeping & Accounting Specialist

Woodfield, Hollybush Lane, Much Birch, HR2 8HX

07989 854593 / 01981 541109

[emmadeer@hotmail.co.uk](mailto:emmadeer@hotmail.co.uk)

Bookkeeping	VAT Returns
Invoicing	Management Accounts
Payroll	Self-Assessment Returns

Emma Partington has over 10 years experience in the finance industry both in practice and in industry, a local business that is able to help with all your bookkeeping needs.

**Call or e-mail today for a no obligation discussion about your requirements.**

# healthyfeet

## Mobile Foot Clinic

Sophie is an experienced and qualified Foot Health Practitioner, a Registered Member of the British Association of Foot Health Professionals and is DBS Police Checked



- Nail Trimming
- Thickened Nails
- Corns
- Callus (hard skin)
- Cracked Heels
- Verrucas
- Fungal Nails & Infections
- Ingrown Toenails
- Diabetic Foot Care



Sophie Limming Dip FH MCFHP MAFHP  
Qualified & Registered Foot Health Practitioner

**Tel 0749 309 2960**

sophie@healthyfeetclinic.co.uk www.healthyfeetclinic.co.uk

## Jargon-free Computer Help



## Computer Tuition, Technical Support and Buying Advice.

Local, friendly help with  
no jargon and  
reasonable rates

**Ben Roberts**  
**01981 540100**  
**07702 760789**

## décor solutions

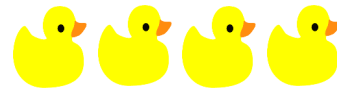
Tim Jones  
Painter and Decorator



Kings Thorn, Herefordshire, HR2 8AW  
Tel: 01981 540242 Mob: 07810 895355  
[tjsi@me.com](mailto:tjsi@me.com)

Three generations of experience specialising in Painting and Decorating services.  
General property maintenance duties carried out.  
Fully insured. Good competitive rates.  
A high standard of workmanship and customer satisfaction guaranteed.

## WYE BATHROOMS



Local family run company. Design & installation of  
Bathrooms & shower rooms



We are also registered with NIC-EIC for all your Electrical  
work

Call Paul for a free quotation

Or visit

[www.wyebathrooms.co.uk](http://www.wyebathrooms.co.uk)

01989-563558

07894-563897



## EMMA BRADBURY EQUINE

Mobile horse clipping services  
Horse sitting / Holiday Cover  
Or just an extra pair of hands!

**25 years experience with horses**  
**Fantastic references available**

01981 541385 : 07725 536648

01981 541385 : 07970 346460

*18 year old babysitter available weekdays/  
weekends. £6 an hour. Ring 07909 940916 for more  
details.*

*Cecily Daffern*



# CROSS ROADS CARE

Forest of Dean & Herefordshire

**Crossroads Care are a specialist charity working to help and support unpaid carers**

If you are caring for a family member, friend or neighbour, our Health and Wellbeing Service may be able to assist you. We offer a range of services including:

### Home visits and support planning

Our support workers can arrange home visits to discuss carers needs and carry out in-depth support planning, tailored to individual circumstances

### Gents Pub Club and Ladies Lunch Club

Regular groups aimed at those being cared for who, due to ill health or disability, may have difficulties getting out to socialise. We provide door to door transport and have qualified support staff on hand

### Community events

Monthly trips out across Herefordshire for Carers and those they care for. With our qualified support staff on hand to ease the caring role, our trips are the perfect chance to get out and about and meet new people

Call us on 01432 355373

[www.crossroadshereford.org.uk](http://www.crossroadshereford.org.uk)

[info@crossroadshereford.org.uk](mailto:info@crossroadshereford.org.uk)

Fred Bulmer Centre, Wall Street, Hereford, HR4 9HP

Registered Charity Number: 1086841



## BAYLEY'S WINDOW CLEANING SERVICE

WATER FED POLE AND TRADITIONAL

WE ALSO CLEAN:-

- ⇒ GUTTERS AND FACIAS
- ⇒ CONSERVATORY ROOFS

### *FREE QUOTATIONS*

\* REFERENCES CAN BE GIVEN \*

\* ESTABLISHED IN AREA \*

PHONE ANDREW

HOME: 01432 508979

MOBILE: 07771 870891

EEmail: bayleyscleaning@gmail.com

## Little Birch Parish Council

Your Little Birch Parish Council Councillors are:-

CLlr Ben Roberts	Chairman	01981 540100	b3nroberts@gmail.com
CLlr Elaine Godding	Vice Chair	01981 540607	ecgodding@hotmail.co.uk
CLlr Steve Naylor		01981 541323	steve.naylor5@btinternet.com
CLlr Mike Morley		01981 541027	morley04@globalnet.co.uk
CLlr Annette Wissler		Contact through the clerk	
Angela Middleton	Volunteer Foot Paths Officer	01981 540377	ajbmiddleton@hotmail.co.uk
Sophie Glover	PC Clerk	01432 270499	littlebirchpcclerk@hotmail.co.uk

Meeting agendas are posted on the Parish notice board at least three days in advance and are also on our web site [www.littlebirchparishcouncil.org](http://www.littlebirchparishcouncil.org)

Every one is welcome to attend Parish Council meetings, and if you have a particular question that you would like to put to him, please can you let the clerk know before the meeting? Mrs Sophie Glover, Little Birch Parish Clerk, The Orchard, Ridgehill, Hereford HR2 8AG

## Little Birch Parish Facebook Group



Find the latest news, events and business listings all in one place.

You are welcome to promote your local business, advertise a local event or post news or information of interest to the village and surrounding area.

Search for *Little Birch Parish Group* on Facebook



**Much Birch Parish Council**  
Parish Clerk Mrs Alison Wright  
Longfield House, Gooses Foot, Kingstone, Herefordshire HR2 9NE  
Tel. 01981 250860  
Email: [muchbirchclerk@hotmail.co.uk](mailto:muchbirchclerk@hotmail.co.uk)

17th April 2018

**PARISH MEETING** - at the Parish Council Meeting held on the 5<sup>th</sup> April 2018 at the Much Birch Community Hall. Those present heard about local concerns and some barbed wire appeared to have been left on the Millennium Green. There was also consideration of one new planning application, and one reserved matters application, and the Parish Council submitted their comments on both of these to the Planning Authority. There was no update, to date, on the appeal for the application for 20 dwellings in Tump Lane. The Neighbourhood Plan was still moving ahead and future dates for Neighbourhood Plan Steering Group Meetings are: 26th April and the 31st May 2018. Start time for all meetings is 7.30 in the Much Birch Community Hall. All are very welcome.

The future Much Birch Parish Council Meeting dates for 2018 are as follows: May 3<sup>rd</sup>, June 7<sup>th</sup>, July 5<sup>th</sup>, no meeting in August, then September 6<sup>th</sup>, October 4<sup>th</sup>, November 8<sup>th</sup> and December 6<sup>th</sup>. The next meetings of the Parish Council (Annual Parish and Annual Statutory) will be held consecutively on **Thursday 3<sup>rd</sup> May 2018 from 7.30pm** - at The Much Birch Community Hall.

Please see notice boards and website for agendas. As always the public and press are more than welcome to attend and will have the opportunity to speak directly to their representatives.

**A reminder that Your Much Birch Parish Councillors are:-**

**Clr Alison Cook** (Chair) Jasmine Cottage, Wrigglebrook Lane, Kingsthorpe, Hereford, HR2 8AW, e mail [thecoops@wyenet.co.uk](mailto:thecoops@wyenet.co.uk) Tel. 01981 540703

**Clr Steve Turner** (Vice Chair) The Underhills, Hollybush Lane, Much Birch, Hereford, HR2 8HX, e mail [turnersofcrossways@btinternet.com](mailto:turnersofcrossways@btinternet.com) and Tel. 01981 540090

**Clr Andrew Crum** Anfield House, Barrack Hill, Kingsthorpe, Hereford, HR2 8AX, e mail [a.crum@btinternet.com](mailto:a.crum@btinternet.com)  
Tel. 01981 540002

**Clr Tim Jones** Swiss Cottage, Wrigglebrook, Kingsthorpe, Hereford, HR2 8AW e mail [tjsi@me.com](mailto:tjsi@me.com) Tel. 01981 540242

**Clr Roisin Burge** The Old Hall, Barrack Hill, Little Birch, Herefordshire, HR2 8AX [roisinburge@hotmail.com](mailto:roisinburge@hotmail.com) Tel. 01981 540724

**Clr David Baldwin** The Granary, Much Birch, Herefordshire, HR2 8HS [baldwin79@btinternet.com](mailto:baldwin79@btinternet.com) Tel. 01981 541198

Full minutes of the meetings and information etc. can be found on the Parish Council website following the link found in this summary. [www.muchbirchparish.org.uk](http://www.muchbirchparish.org.uk).

You can also find us on Twitter at <https://twitter.com/MuchBirchPC> and Facebook at <https://www.facebook.com/groups/Much.Birch.Parish>

---

## South Hereford Rural Safer Neighbourhood Team (SNT)

**Lowri Anderson PCSO 40247**

**Hereford City Southside and Rural SNT**

**West Mercia Police**

**Get in touch**

**101** to talk to your local SNT or report a crime  
[herefordsouthside.snt@westmercia.pnn.police.uk](mailto:herefordsouthside.snt@westmercia.pnn.police.uk)  
[www.westmercia.police.uk](http://www.westmercia.police.uk)

**Herefordshire Cops / @southsidecops**

Only call 999 in an emergency, when a crime is in progress or life is in danger.

**For daily updates on incidents in your area register for our Dotmailer service via [www.westmercia.police.uk](http://www.westmercia.police.uk).**

**Make the difference**

For more information about becoming a Special Constable, please visit,

**Warwickshire Police:** [www.warwickshire.police.uk/specialconstables](http://www.warwickshire.police.uk/specialconstables)

**West Mercia Police:** [www.westmercia.police.uk/specialconstables](http://www.westmercia.police.uk/specialconstables)



Where we work; South Wye SNT is based at South Wye Police Station, Goodrich Grove, Newton Farm, Hereford, HR2 7DB, we work around the areas of Rural: Aconbury; Allensmore; Ballingham; Bolstone; Callow; Dewshall; Dinedor; Garway; Grafton; Harewood; Haywood; Hentland; Holme Lacy; Kenderchurch; Kentchurch; Kilpeck; Kingstone; Little Birch; Much Birch; Little Dewchurch; Llandinabo; Llanwarne; Lower Bullingham; Much Dewchurch; Orcop; Pencoyd; Pontrilas; SDevereaux; St Weonards; Tretire with Michealchurch; Thrupton; Treville; Wormbridge; Wormelow.

**Your team**

Sgt Emma Freer, PC Roger Bradley, PC Jim Phillips, PCSO Lowri Anderson, PCSO Adam Westlake, PCSO Christina Howard, PCSO Christopher Yarwood.

**About your team....** Safer Neighbourhood Teams work with local people and partners to identify, tackle and solve issues that matter to the community where you live.

Making neighbourhoods safer by cutting day to day crime and anti-social behaviour is at the heart of keeping people in West Mercia safe.

