

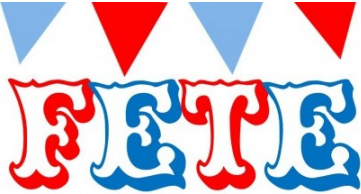


Newsletter for King's Thorn, The Birches & Aconbury

A newsletter for the villages of King's Thorn, Little Birch, Much Birch & Aconbury.

July/August 2017. First published 1977.. Happy 40!

LITTLE BIRCH CHURCH



SATURDAY JULY 8TH.

THERE WILL BE THE
USUAL STALLS,
INCLUDING CAKES,
PLANTS , BRIC-A-BRAC,



BOOKS AND A GRAND DRAW
WITH PRIZES RANGING FROM
THEATRE TICKETS, A LARGE
HAMPER, SUNDAY LUNCH FOR
2, BOTTLE OF WHISKY



PLUS MANY OTHER PRIZES.

DRAW TICKETS ARE AVAILABLE FROM
PCC MEMBERS AND ARE ON SALE NOW.

Church Services July-August 2017



Sun. July 2nd	L.Birch	11am	Holy Communion
Sun. July 9th	M.Birch	9.15am	Family Communion
	L.Birch	11am	Morning Worship
Sun July 16th	MBirch	9.15am	CW Communion
	LBirch	11am	1662 Communion
Sun July 23rd.	MBirch	9.15am	Morning Worship
Sun July 30th	MBirch	9.15am	Said Communion
		11am	Archenfield Group Service at Newhouse Woods, Garway Hill.
Sun Aug 6th.	LBirch	11am	Holy Communion
Sun Aug 13th	MBirch	9.15am	Family Communion
	LBirch	11am	Morning Worship
Sun Aug 20th	MBirch	9.15am	CW Communion
	LBirch	11am	1662 Communion
Sun Aug 27th	MBirch	9.15am	Morning Worship

The Monastery of Poor Clares at 11am every Sunday.
Holy Communion at Much Birch every Thursday at 9.30am.

Diary Dates

July 2017

- 6th Coffee Morning LBVH 10.30am
- 6th MB Parish Council Meeting MBCH 7pm
- 8th Little Birch Church Fete
- 9th 100 Club Draw MBCH 10.30am
- 11th Whist Drive LBVH 7.30pm
- 12th First Aid Training LBVH 7pm
- 18th Ross Library Development Group 7pm
- 19th Development Plan Meeting LBVH 7pm
- 22nd Book Exchange Methodist Chapel 10am
- 22nd Gardening Club LBVH
- 23rd Open Day Merivale Farm

August 2017

- 3rd Coffee Morning LBVH 10.30am
- 8th Whist Drive LBVH 7.30pm
- 19th Book Exchange Methodist Chapel 10am
- 20th History Group Walk 2pm
- 20th Tea on the Terrace 1pm
- 27th Laskett Gardens 11am

September 2017

- 7th MB Parish Council Meeting MBCH 7pm
- 10th Dog Show Nibole Farm 1pm

Much Birch Community Hall 100 Club

The June draw took place on 11th June 2017 in Much Birch Community Hall at 10.30am and the results were as follows:

1 st prize – 100	2 nd prize - 90
Mr. I.K.J. Jones	Mr. & Mrs. D. Pennington
Barcelona	Much Birch

The next draw will take place on 9th July 2017 in Much Birch Community Hall.

There will be no newsletter next month so please send copy for the September Newsletter to editorial@birchesnews.org.uk or written contributions to John Bryant at Bramley Bungalow, Aconbury Close, King's Thorn.

—by 18th August please.

Local News July 17



.A warm welcome is given to Kelly and Simon Fox and their children, William and Lucy who have recently moved into Upper Wrigglebrook Cottage and we trust they will all be happy in their new home.

Congratulations go to Lydia Waldron of Kings Thorn who recently completed phase 1 of her Army training. Debbie, Nigel and the family had a wonderful day at her 'passing out' parade .

Lydia has now started the next stage of her training as a 'medic' and we wish her every success in her future career.

Drs. Patrick and Maureen Beauchamp wish to thank everyone who sponsored their son, James, who lives in N. Italy and at the age of 53 has only recently taken up running. He ran the local Marathon on behalf of St. Michael's Hospice and raised £987 -17p a truly magnificent achievement. He came in second in a time of just over 3 hours. The route from the Leisure Centre took in Weobley and Sarnesfield and back to Hereford Leisure Centre.

Many thanks to Tina and Felix at the Castle Inn for putting up a 'sponsorship form' and to Gill and the customers at the Black Swan, Much Dewchurch, too.

Three local friends, Sally Dymott, Stephen Mason and Ray Ingram have had hip replacement operations recently and we are pleased to report that they are all making good progress.

Betty and John Bryant celebrated their Golden Wedding recently with an 'Afternoon Tea' at the Axe and Cleaver with 48 friends and family. Sue and Andy Hoare put on a delicious tea of sandwiches and cakes and 'did us proud'.

We are sad to report the passing of Tony Grubb of Eden Lane, Barrack Hill, at the age of 80 years. Tony was a familiar sight walking his 'rescued greyhound 'Leah' on or around the lanes near to Barrack Hill until the last month.



EJ PARTINGTON BOOKKEEPING

Bookkeeping & Accounting Specialist
Woodfield, Hollybush Lane, Much Birch, HR2 8HX
07989 854593 / 01981 541109

emmadeer@hotmail.co.uk

Bookkeeping	VAT Returns
Invoicing	Management Accounts
Payroll	Self-Assessment Returns

Emma Partington has over 10 years experience in the finance industry both in practice and in industry, a local business that is able to help with all your bookkeeping needs.

Call or e-mail today for a no obligation discussion about your requirements.

Others will have known Tony in other areas of his life, for he was a quiet , unassuming man who became a friend to many. Tony's life was centred around golf, he was a professional golfer of great talent and started playing at the age of twelve at Abersoch whilst on holiday with his parents, hitting golf balls with his father's clubs. This was just after WW2 and the possibility of becoming a professional golfer was some way off. Tony went to Malvern College and while there, he received lessons under the Golf Foundation Scheme. Indeed , he often 'ducked out' of

rugby and cricket to play the Worcester three times a week. When he left College at 16, he tried farming for 6 months but 'golf ' was in his blood and he was appointed Assistant at Fulwell Golf Club in Surrey at 17, under the tutelage of Bill Cox.

National Service interrupted the golf aged 18 and he served in the RAF in Cyprus and then returned to Fulwell where his golf continued to improve.

In 1958, he scored his first major success when he won the Assistants Championship and two years later was offered the job as Assistant at Coombe Hill a prestigious Club in Surrey. Tony's reputation was enhanced when he won the Assistant's Championship for a second time. However, serious illness held back his career for a while but fortunately he made a full recovery.

Golf was just beginning to become an International sport and Tony was twice sponsored to tour the golf circuit in America. All that experience came in useful when he won the PGA Championship in 1964. However, all was not plain sailing as he was again blighted by ill health and a serious car accident, but he again found strength to return to the circuit and had many successes both in the UK and abroad.

In 1976, he decided to return to his farming roots which were

WYE BATHROOMS









Local family run company. Design & installation of Bathrooms & shower rooms

We are also registered with NIC-EIC for all your Electrical work

Call Paul for a free quotation
Or visit
www.wyebathrooms.co.uk

01989-563558
07894-563897





APPROVED CONTRACTOR

linked to this area as his father, Gawen, ran a fruit farm near Peterstow, growing mainly apples. However, on reaching 50, a second golfing career beckoned and he started playing the Senior's European Tour. Tony with Rosemary travelled to many wonderful locations with Rosemary caddying for him. When he was not touring, Tony was teaching golf at Rodway Hill at Highnam before he finally called it a day

retiring some 5 years ago.

This left him time to pursue his other passion, building and flying model aeroplanes, which were built with great care and expertise. He was helped by his brother in law Andrew and his good friend Bernard Morris.

The most important part of Tony's life was his family, his wife of over 25 years, Rosemary, and his daughter from his first marriage, Mandy, and her husband, Rob, and the grandchildren, Logan, Sam and Joe. There was also his step daughter Jessica and her husband, Soren, and children, Abigail and Theo.

Andrew has been previously mentioned, married to his special sister, Gillie.

We must not forget to mention the dogs which were special to Tony, over the years Jake, Murphy and Leah were constant companions. Tony was a quiet, modest and kind man who found true contentment with Rosemary off the Barrack Hill in the quiet and lovely part of Herefordshire.

Tony's funeral service was held at Little Birch Church on Thursday, 15th June conducted by Rev. Mark Johnson.

Donations in memory of Tony were sent to the Forever Hounds Trust, formerly Greyhound Rescue, and we extend to Rosemary, and Mandy and their families our deepest sympathies.

BM KAYE TAXI

**Local Taxi available
no job too large or too small !!**

Contact Brian Kaye on

**01981 540734 OR 07968 147415
DAYS ONLY**



FB: Murphy's Paw
Doggie Services

Murphy's Paw **The home of happy woofers!**

**Doggie Daycare
One to One Grooming
Home Boarding**

Tump Lane, Much Birch

Tel: Tricia 07732 286069

murphypaw2005@gmail.com

www.murphypaw.co.uk

Providing a true "home from home" environment.

We welcome friends, old and new!

Little Birch & Aconbury's Joint Neighbourhood Development Plan

At the next meeting of the Steering Group, the Consultant Dr. David Nicholson, will be explaining the **Draft Neighbourhood Development Plan** he has produced, following consideration of David's 'Housing Delivery Report' at the last meeting in April.

This will show how the two parishes can meet the requirement for additional homes.

For Aconbury, a settlement boundary is to be drawn around the hamlet, within which new homes may be provided.

The approach in Little Birch will deliver the housing target through a combination of identifying a site for development and allowing other sites in the village to come forward.

In both parishes, further residential development may be allowed in the more rural areas under the guidelines of Local Plan Core Strategy policy RA3. This includes the conversion of redundant rural buildings.

The Draft Plan is much more than just how to meet housing targets, with policies also to be included on local economy, community facilities and the environment, to reflect the questionnaire responses from the residents' survey and the kind of 'Neighbourhood' we would all like to see in the future. When completed, the **Draft Neighbourhood Development Plan** will be delivered to all households in Aconbury and Little Birch for consultation.

Anyone is welcome to attend these meetings and there is no long term commitment to be part of the Steering Group, so if you wish to be part of the decision process, remember to be certain to attend the next meeting which is now on **Wednesday 19 July at 7pm at Little Birch Village Hall.**

For more information and to be kept up to date, or have notification of future meetings please contact Sophie Glover, Clerk to LB&A NDP Steering Group - littlebirchpcclerk@hotmail.co.uk

To follow the progress of Little Birch and Aconbury Neighbourhood Development Plan check out the website – www.littlebirchparishcouncil.org.

BAYLEY'S WINDOW CLEANING SERVICE

WATER FED POLE AND TRADITIONAL

WE ALSO CLEAN:-

- ⇒ **GUTTERS AND FACIAS**
- ⇒ **CONSERVATORY ROOFS**

FREE QUOTATIONS

*** REFERENCES CAN BE GIVEN ***

*** ESTABLISHED IN AREA ***

PHONE ANDREW

HOME: 01432 508979*

MOBILE: 07771 870891

Email: bayleys@fsmail.net



Thursday 6th July 10:30am - 12:30pm

Thursday 3rd August 10:30am—12:30pm

Little Birch Village Hall

Thank you to everyone who recently attended the enjoyable LBVH informal coffee morning.

Those who attended commented that they appreciated the opportunity to catch up with old friends, get to know new neighbours and meet interesting people who live in the area.

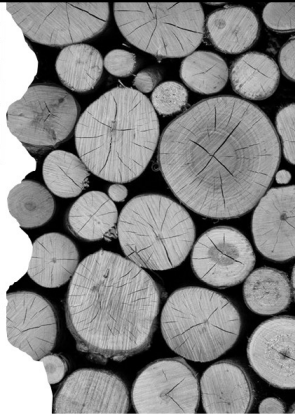
If you would like help with transport, please contact Margaret on 540374 and we will do our best to link you up with a fellow traveller with wheels!

We look forward to seeing you

**R&R
FIREWOOD**

*Well seasoned hardwood
Cut to any size
Delivered to your door*

STEPHEN or TARA
Tel: 01432 870282



**BRENDAN MORRIS
CONSTRUCTION & CARPENTRY
SPECIALISING IN uPVC
WINDOWS, DOORS &
CONSERVATORIES**

call now for a free quotation
on; 07855760912
email

brendanmorris05@gmail.com

The Humble Postage Stamp

During June we have congratulated John and Betty Bryant on their Golden Wedding Anniversary and those of you who follow Gardeners' World will also have noticed that the BBC programme is celebrating 50 years of broadcasting.

The humble postage stamp in its present design has also reached its 50 year milestone.

In 1965 it was decided to change the design of definitive stamps. The Queen's portrait, from a photograph by Dorothy Wilding, had appeared on stamps since her accession to the throne in 1952. Various artists were invited to submit portraits to be considered for inclusion on the new stamp design. One such artist was a sculpture, Arnold Machin, and he produced some moulds in clay for consideration. He photographed his work and submitted the prints. Eventually the Queen, The Government and Royal Mail approved his design of the Queen's portrait and the first stamps went on sale on 5th June, 1967 and that design has become iconic and is still held in high regard 50 years on.

Royal Mail are quoted as saying that over 200 billion stamps have been sold with the current 'Machin' portrait on them.

Phosphor bands have been used for electronic sorting. These appeared in yellow until 1995 when they were changed to blue. They appear as vertical 'shady' lines on the stamps either one on each side or one in the middle and are visible either with an ultra violet light or can be seen when holding the stamp flat and looking along the stamp towards a light source.

In 1993 the perforations on both sides were changed for security purposes when elliptical perforations were incorporated. This did not stop the forgers and a second problem occurred when self adhesive stamps were introduced. If they escaped cancellation they could be peeled off the envelope and reused.

In February 2009 U-shaped slits were cut into stamps, the idea being that the centre piece within these slits would break away if an attempt to peel the stamp off an envelope took place thus preventing the stamps being used again. It was not wholly successful. Shortly afterwards a further security feature was added with "ROYAL MAIL" being printed many times in 'wavy' lines across the stamps in iridescent ink. This can be seen with the naked eye appearing in 'shiny' waves. More features were added to the iridescent overprints.

With the aid of a magnifying glass (about x10) one of the 'MAIL' words will be seen as 'MA17'. This represents the year that the stamp was printed and usually appears in front of the Queen's eye.

Additionally, in the top right hand corner above the square feature on the tiara a code letter may appear in the word 'MAIL'. If no code letter appears then the stamp has been bought over the counter off a large sheet of stamps. Should the word be MSIL then the stamp has come out of a book of Six, if it is MTIL then it is from a book of Twelve, MMIL is from a Miniature sheet. There are a few other codes as well but the above are the most common.

The 'Machin' design will most likely continue for the remainder of the Queen's reign.

Derek Scrivens

The Laskett Gardens
Sunday, 27th August
11am-5pm
Laskett Lane, Much Birch, Herefordshire HR2 8HZ

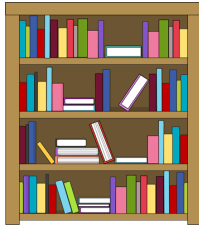
This intriguing garden, boasting more than 20 unique features, has been painstakingly created over the past 40 years.

Easily accessed, just off the A49 at Much Birch, The Laskett Gardens are the creation of Sir Roy Strong, the former director of the V&A Museum and the National Portrait Gallery and his late wife, the acclaimed theatre and film designer, Julia Trevelyan Oman. The gardens offer a unique portrait of its makers with the story of their marriage and their extraordinary lives woven into its very fabric.

Tickets £9 pre-booked
£10 on the day
Parking available

For more information, please contact the Community Fundraising Team at St Michael's Hospice on 01432 851000 or visit www.st-michaels-hospice.org.uk

Ross Library Development Group



The next Meeting will be held on Tuesday 18th July 7.00 for 7.30 p.m. in Ross Library. The Talk will be about **'CANAL WOMEN, THEIR CHILDREN AND CRAFTS'**.

Three Speakers will bring an assortment of their crafts and they will describe family life aboard working canal boats. All interested are welcome. Entry is £5.00 p.p. for non-Members and £4.00 p.p. for RLDG Members; Students free. Refreshments are provided for a donation. All funds raised go towards improving Ross Library facilities. For further details contact 01989 720539 or 562424 or see the website www.rldg.org.uk

GARTH BRADBURY FENCING LTD

All types of fencing

Gates

Field Shelters

Timber Outbuildings

www.gb fencing contractors.com

garthbradburyfencing@hotmail.com

01981 541385 : 07970 346460

Tea on the Terrace

WHEN: 20 Aug, 2017 1-5pm

WHERE: St Michael's Hospice Bartestree HR1 4HA

Tea on the Terrace will be held at St Michael's Hospice overlooking apple orchards and the beautiful Herefordshire countryside.

Savour a fine selection of sandwiches, freshly baked scones with cream and strawberry jam, and a mouth-watering range of freshly-baked pastries and cakes.

Choose from our range of quality teas and coffee or opt for a glass of fizz to add some sparkle to your afternoon.

Completing your summer treat will be gentle jazz music, helping you unwind while our dedicated Hospice team sees to your every need.

£20 per person

Advance bookings only

Menu

**A selection of sandwiches Fresh cream scones
Freshly-baked cakes and pastries Teas, infusions or coffee**

Please note; a contingency plan will be in operation in the event of adverse weather.

To book, call Community Events on 01432 851 000 or visit:

<http://www.st-michaels-hospice.org.uk/event/tea-on-the-terrace-2/>

History Group Walk



The Little Birch and King's Thorn History Group is arranging a walk to The Mynde at Much Dewchurch from Wormelow on Sunday August 20th.

We will meet at the Park Hall Ballroom car park at 2.00pm and propose to walk along the old carriageway, past the lake and round the buildings on the Herefordshire Trail footpath. The Mynde is one of the important country houses in Herefordshire with a long and interesting history.

Please come and join us. It will be a 'there and back' walk of about 3 miles unless you wish to take a detour to Much Dewchurch.

King's Thorn and Little Birch Gardening Club



On July 22nd, We shall be visiting members' Gardens. See notice boards for itinerary and further details.

No meeting in August but The Annual Open Show takes place on 2nd September.

Details and Entry Forms are attached to the front of this Newsletter.



John Bryant. 01981 540316.

Great Local Food & Drink in Much Birch

All Day Every Day



PILGRIM
HOTEL



VALLEY
RESTAURANT
'Farm to Fork'

Steve, Pat, Trevor & Deepak are delighted to offer you fabulous food & drink, stunning views and friendly service 7 days a week, every week.

- Breakfast
- Morning Coffee
- Lunch
- Afternoon Teas
- Dinner
- Celebration Meals
- Conferences
- Wakes

Cream Tea—£5.95
Tea/Coffee, Homemade Scone and Biscuits

Pilgrim's Tea—£7.95
Cream Tea & Selection of Cakes

Full Afternoon Tea—£14.95
Pilgrims Tea & Selection of sandwiches

Sparkling Afternoon Tea—£18.95
Full Afternoon tea & glass of prosecco

Booking is recommended on 01981 [540742](tel:01981540742) - Menus can be found on www.pilgrimhotel.co.uk

Polished
NAILS AT THE LOFT

Pilgrim Hotel - Much Birch



NAILS AT THE LOFT

Manicures, Pedicures, Cracked Heel Treatments

Sculptured Acrylic Nail Extensions, OPI Gel Colour Polish (Last 2-3 weeks)

Beach Toes, Hollywood Toes, Toenail Restoration

GIFT VOUCHERS / PRINCESS VOUCHERS (Age 5+) AVAILABLE

OPENING HOURS TUES - SAT 10am - 4pm (Evening appointments are available).

15% HAPPY HOUR - TUESDAYS & WEDNESDAYS 3-4PM

Senior Citizen Discounted Rates Available Every Tuesday

City & Guilds Qualified Nail Technician - OPI Salon Professional

Fully Insured - Beautiful Salon With A View!

Call Jacqueline on 07759131783 to make an appointment

(Situated at the end of The Pilgrim Hotel Car Park)

Little Birch Village Hall Committee
Newsletter notices for July & August 2017

Whist Drive

We guarantee a warm welcome and a fun evening with good company at our monthly whist drive whatever your ability. Excellent prizes and refreshments too. Our next **Whist Drives** are on **Tuesday 11th July & Tuesday 8th August** at Little Birch Village Hall. We start at **7.30 pm** and the entrance fee is just £2.00.

First Aid training

Little Birch Village Hall and Little Birch Parish Council have recently purchased an AED or Automatic Emergency Defibrillator with the help of part grant funding. This has now been installed outside the hall. West Midlands Ambulance Service First Responders will be offering **FREE** Emergency First Aid training at Little Birch Village Hall on **Wednesday 12th July at 7pm**. Everyone is very welcome to attend and refreshments will be provided.

Community Book Exchange/Lending Library

The Book Exchange will be on the morning of **Saturday 22nd July & Saturday 19th August** at the former Methodist Chapel opposite the Village Hall **10am – 12pm**.

All members of the community are invited to join us for this enjoyable monthly event which offers not only a wide range of books and DVDs (to suit all ages and interests) but also an opportunity to meet others and exchange recommendations for a good read.

There is a charge of just £1 per adult towards the cost of the hire and refreshments.

Little Birch Village Hall Committee AGM

The **Little Birch Village Hall Committee AGM** was held on Tuesday 27th June. After many many years of working hard for the Village Hall, committee members Sue Jones, Robyn Hodges, Adrian Hodges and Minute Secretary Roisin Burge have decided to step down. The committee would like to thank them for everything they have done over the years to keep the hall going and provide events that are enjoyed by the whole community. New members Liz Hall and Linda Mayden were welcomed to the committee.

Advance Notice – Annual Dog Show

The annual companion dog show will be held on **Sunday 10th September** in the **field below Castle Nibole Farm** (Village Hall if wet)

Entries from 1pm

Judging from 2pm

SEPTIC TANK EMPTYING

from the septic tank people

AQUASSIST

Aquassist Ltd - 85 Aylestone Hill, Hereford. HR1 1HX



FREEPHONE

0800

448 8881

installations
soakaways
surveys advice

www.aquassist.co.uk/book

disposal@aquassist.co.uk



HOLLYBUSH HIRE

Vintage Tea Set Hire

Woodfield, Hollybush Lane, Much Birch, HR2 8HX

07989 854593 / 01981 541109

emmadeer@hotmail.co.uk

Tea Cups, Saucers & Tea Plates

Sandwich / Cake Plates

Teapots, Sugar Bowls & Milk Jugs

Cake Stands

Lanterns, Mirrors



Would you like to improve your computer skills? Do more online? Stay in touch with family and friends? Maybe you were given a computer or tablet as a gift but aren't sure how to use it? I can help.

- One to One support in your home using your own tablet or computer if you have one.
- All abilities catered for from complete beginners to those who want to improve existing skills.
- I can also provide technical support for your computer problems and advice on buying a new computer or tablet and advise on the best broadband connection for you.

I have extensive experience of working with individuals and groups and will help you to gain confidence and learn new skills in a relaxed, supportive and jargon free way.

Ben Roberts

01981 540100 - 07702 760789 - ben.roberts@outlook.com

Aconbury Shepherd Huts



Our huts are hand built to the highest of standards. Our standard hut includes insulation, double glazing, electrics and decoration.

Uses include craft room, play house, sleep over's etc.

Come and see our display hut or request our new brochure

We also build stables, field shelters, garden sheds, play houses, garden features and bespoke gates. Please ring for our dedicated brochure

Stephen Turner. The Underhills, Hollybush Lane, Much Birch, Herefordshire. HR2 8HX.

**Telephone: Office 01981 540090
Mobile 07768 206296**

**www.aconburyshepherdhuts.co.uk
turnersofcrossways@btinternet.com**



DEAN & SUN
Solar Electric Installation

Offering a full range of electrical services and now specialising in the installation and maintenance of PV solar panels to generate electric for households and small businesses.

Please contact us for a free, no obligation site survey and quotation or to discuss your requirements in more detail. We aren't salesmen, we aren't working for anyone else, we aren't a regional office...

We are a Hereford based family run business who will offer the perfect balance of service, value and affordability to new and existing customers.

Please see our website for full details and updates on the changes to the Feed In Tariff or email us at info@deanandsun.co.uk to receive our quarterly newsletter.

Tel: 01981 540030
Mobile: 07818 847986
Email: info@deanandsun.co.uk
www.deanandsun.co.uk

FOR FUTURE GENERATIONS



Self-storage Herefordshire

**£15 per week—no VAT
20ft x 8ft**

**7 Days a week access
Long or short term rental.**

Seasoned Firewood for Sale

George Cole

Mob: 07800952317

Tel: 01981241274

Email: coleg600@gmail.com

Much Birch WI

Much Birch WI meets on the third Tuesday of each month in Much Birch Community Hall, just off the A49. The Hall is next door to the surgery and both are signed from the road.

Visitors and potential new members are always welcome. Please contact Sallie on 01432 340069 for further details.

W.M. PARTINGTON

GENERAL BUILDER

- MINI-DIGGER & EXCAVATOR HIRE

RENOVATIONS	ROOFING	UPVC WINDOWS
BARN	CONCRETING	AND DOORS
CONVERSIONS	PLASTERING	BRICKWORK
NEW BUILD	GROUNDWORK	STONEMASONRY
EXTENSIONS		

RING FOR A QUOTATION

MUCH BIRCH
07774 805369 / 01981 541109

The Singing Tree is an informal fun singing group that started its life in Much Dewchurch, moved with us to Garway and we are now meeting in Kingsthorne since our move here in July last year. No auditions, no need to read music, just come along and enjoy yourself. We meet on Wednesdays at 7.30 pm at Wynds Poynt. For more information please contact Hilary on 01981 540022 the turning@phonecoop.coop



décor solutions

Tim Jones
Painter and Decorator



Kings Thorn, Herefordshire, HR2 8AW
Tel: 01981 540242 Mob: 07810 895355
tjsi@me.com

Three generations of experience specialising in Painting and Decorating services.
General property maintenance duties carried out.
Fully insured. Good competitive rates.
A high standard of workmanship and customer satisfaction guaranteed.



St Michael's Hospice
Always a place of light and love

Full or part House clearance service



Tom Egerton and Del Cunningham

St Michael's Hospice provides a sympathetic house clearance service. Items collected are sold or recycled by our Retail Team. This helps us continue providing vital care free of charge to patients, their families and carers.

For more information, call the
Retail Team on 01432 851 000

If you can, please Gift Aid your donation

The Gift Aid scheme enables us to claim an extra 25p for each £1 donated at no extra cost to the donor. So, if Gift Aided, a sofa sold for £100 would mean a total of £125 raised for your Hospice.

giftaid it

St Michael's Hospice provides all its care free of charge to patients, their families and carers. This care is made possible by supporters taking part in fundraising events, playing our Lottery, shopping at our retail outlets, making charitable donations and leaving gifts in their wills.

Castle Inn

01981 540 516



Your Local Local!



Monday Closed
Tuesday 12-3 and 6-11 drinks only
Wednesday, Thursday and Friday 12-3 & 6-11
Saturday 12pm - Finish
Sunday 12pm - Finish

*Delicious food in our restaurant
and take away menu available*

Quiz Night 3rd Sunday of each month at 8pm
Live Music 4th Saturday each month from 8.30
Open Mike Night 3rd Wednesday each month

To book ring 01981 540516

We look forward to welcoming you soon.

healthyfeet

Mobile Foot Clinic

Sophie is an experienced and qualified Foot Health Practitioner, a Registered Member of the British Association of Foot Health Professionals and is DBS Police Checked



Sophie Limming Dip FH MCFHP MAFHP
Qualified & Registered Foot Health Practitioner

Tel 0749 309 2960

sophie@healthyfeetclinic.co.uk www.healthyfeetclinic.co.uk

Little Birch Parish Council

Your Little Birch Parish Council Councillors are:-

CLlr Ben Roberts	Chairman	01981 540100	b3nroberts@gmail.com
CLlr Elaine Godding	Vice Chair	01981 540607	ecgodding@hotmail.co.uk
CLlr Steve Naylor		01981 541323	steve.naylor5@btinternet.com
CLlr Mike Morley		01981 541027	morley04@globalnet.co.uk
CLlr Annette Wissler		Contact through the clerk	
Sandra Cameron	Volunteer Foot Paths Officer	01981 540397	shcameron@hotmail.co.uk
Sophie Glover	PC Clerk	01432 270499	littlebirchpcclerk@hotmail.co.uk

The steering group is at a key stage of the NDP, and the PC would remind every one that if/when it is passed, the NDP will be the guide that Herefordshire Council planning department will use in any decisions about granting planning permission up until 2031.

Meeting Agendas are posted on the Parish notice board at least three days in advance and are also on our web site.

Mrs Sophie Glover, Little Birch Parish Clerk, The Orchard, Ridgehill, Hereford HR2 8AG

Website: www.littlebirchparishcouncil.org

Rural Hub Herefordshire

The latest newsletter from the Herefordshire Rural Hub can be found on the website using the link below:-

<http://www.herefordshireruralhub.co.uk/newsletter-library/>

Frances Keogh

Herefordshire Rural Hub Administrator

Email: admin@herefordshireruralhub.co.uk

Tel: 01432 268 428

Website: www.herefordshireruralhub.co.uk

Twitter: @Hfds_RuralHub

You can also find us on Facebook by searching for 'Herefordshire Rural Hub'

ALLANGAS & OIL



- ◆ Oil Installation and Servicing
- ◆ Boiler Specialist
- ◆ Landlord Inspections
- ◆ Heating Installations
- ◆ All aspects of domestic gas
- ◆ LPG and plumbing
- ◆ Ex British Gas engineer
- ◆ Over 21 years experience

T: 01432 840491
M: 07761646635

Steven Allan

Oftec Reg No: C12495
Gas Safe Reg No: 188939



Much Birch Parish Council
Parish Clerk Mrs Alison Wright
Longfield House, Gooses Foot, Kingstone, Herefordshire HR2 9NE
Tel. 01981 250860
Email: muchbirchclerk@hotmail.co.uk

29th June 2017

The next meeting of the Parish Council will be held on **Thursday 6th July 2017 from 7.30pm** - at The Much Birch Community Hall.

Please see notice boards and website for agendas. As always the public and press are more than welcome to attend and will have the opportunity to speak directly to their representatives.

A reminder that:-

Your Much Birch Parish Councillors are:-

Cllr Alison Cook (Chair) Jasmine Cottage, Wrigglebrook Lane, Kingsthorpe, Hereford, HR2 8AW, e mail thecooks@wyenet.co.uk Tel. 01981 540703
Cllr Steve Turner (Vice Chair) The Underhills, Hollybush Lane, Much Birch, Hereford, HR2 8HX, e mail turnersofcrossways@btinternet.com and Tel. 01981 540090
Cllr Andrew Crum Anfield House, Barrack Hill, Kingsthorpe, Hereford, HR2 8AX, e mail a.crum@btinternet.com Tel. 01981 540002
Cllr Tim Jones Swiss Cottage, Wrigglebrook, Kingsthorpe, Hereford, HR2 8AW e mail tjsj@me.com Tel. 01981 540242
Cllr Roisin Burge The Old Hall, Barrack Hill, Little Birch, Herefordshire, HR2 8AX roisinburge@hotmail.com Tel. 01981 540724
Cllr David Baldwin The Granary, Much Birch, Herefordshire, HR2 8HS baldwin79@btinternet.com Tel. 01981 541198

Full minutes of the meetings and information etc. can be found on the Parish Council website following the link found in this summary. www.muchbirchparish.org.uk.

You can also find us on Twitter at <https://twitter.com/MuchBirchPC> and Facebook at <https://www.facebook.com/groups/Much.Birch.Parish>

A reminder, please, that all new articles or advertising copy for inclusion in this Newsletter should now be sent to editorial@birchesnews.org.uk

Application for new advertising and rates should be directed to birchesnews@gmail.com

Much Birch PC Meeting Dates for 2017

The 2017 dates for Much Birch Parish Council Meetings, all on Thursdays from 7.30 to 9.30pm in the Community Hall:

July 6th, September 7th, October 5th, November 2nd and December 7th

South Hereford Rural Safer Neighbourhood Team (SNT)

Lowri Anderson PCSO 40247

Hereford City Southside and Rural SNT

West Mercia Police



Get in touch

101 to talk to your local SNT or report a crime
herefordsouthside.snt@westmercia.pnn.police.uk
www.westmercia.police.uk

Herefordshire Cops / @southsidecops

Only call 999 in an emergency, when a crime is in progress or life is in danger.

For daily updates on incidents in your area register for our Dotmailer service via www.westmercia.police.uk.

Make the difference

For more information about becoming a Special Constable, please visit,

Warwickshire Police: www.warwickshire.police.uk/specialconstables

West Mercia Police: www.westmercia.police.uk/specialconstables

Where we work; South Wye SNT is based at South Wye Police Station, Goodrich Grove, Newton Farm, Hereford, HR2 7DB, we work around the areas of Rural: Aconbury; Allensmore; Ballingham; Bolstone; Callow; Dewsall; Dinedor; Garway; Grafton; Harewood; Haywood; Hentland; Holme Lacy; Kenderchurch; Kentchurch; Kilpeck; Kingstone; Little Birch; Much Birch; Little Dewchurch; Llandinabo; Llanwarne; Lower Bullingham; Much Dewchurch; Orcop; Pencoyd; Pontrilas;

Your team

Sgt Emma Freer, PC Roger Bradley, PC Jim Phillips, PCSO Lowri Anderson, PCSO Adam Westlake, PCSO Christina Howard, PCSO Christopher Yarwood.

About your team.... Safer Neighbourhood Teams work with local people and partners to identify, tackle and solve issues that matter to the community where you live.

Making neighbourhoods safer by cutting day to day crime and anti-social behaviour is at the heart of keeping people in West Mercia safe.



Improve flexibility, build strength and develop control and endurance

PILATES

with Alison Allan

Little Dewchurch Village Hall
(3 miles from the A49,
between Hereford and Ross)

Mondays (am) and Wednesdays (pm)

Telephone: 01432 840491

Email: alisonpilates2016@gmail.com



STOTT PILATES™

merithew.com/brand/STOTT

Andy and Sue

Welcome you to

THE AXE AND CLEAVER Much Birch



Excellent food served in our spacious Restaurant

SENIOR CITIZENS' LUNCH
On Wednesdays—2 courses
For £6.95

SUNDAY ROAST LUNCH
£10.95 for 2 courses—Bookings advised

Lovely Beer Garden with field for Touring
Caravans and Tents

Tel: 01981 540203

No Stress, No Worries,

Glazy Days

- ◆ CONSERVATORIES
- ◆ WINDOWS
- ◆ DOORS
- ◆ FASCIAS
- ◆ SOFFITS
- ◆ GUTTERS

◆ ALSO MISTED UNITS REPLACED

01981 541121

07818 611010

www.glazydays.net

Email: sales@glazydays.net

EMMA BRADBURY EQUINE

Mobile horse clipping services
Horse sitting / Holiday Cover
Or just an extra pair of hands!

25 years experience with horses
Fantastic references available

01981 541385 : 07725 536648

01981 541385 : 07970 346460



Yoga

In Much Dewchurch and Steiner Academy
Mondays 6.00—7.15



- ⇒ Tension and stiffness?
- ⇒ Back ache, backache, general aches and pains?
- ⇒ Difficulty sleeping?

Learn how to relax and let go. Discover how you can move more freely and improve your posture. A practical approach to yoga that is adaptable to anyone regardless of age or physical condition. All welcome

- ◆ Small group Classes
- ◆ Individual attention
- ◆ Connect with your breath
- ◆ Link simple movements for health and well-being
- ◆ Suitable for those recovering from injuries

Individual lessons also available

For more info contact Mike 01981 250341